

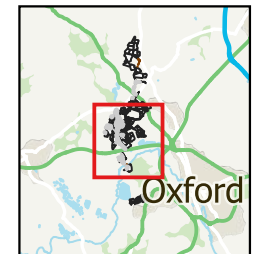
### General Notes & Key

For this geophysical investigation, the fluxgate gradiometer array manufactured by Senoys (Germany) was used. The sensors were mounted on a wheeled frame approximately 0.25- 1.0 m apart with positional data provided by an RTK GNSS.

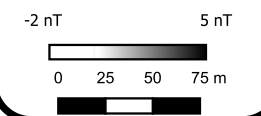
A small amount of post-acquisition processing is required to extract and visualise useful information from the acquired data. Once this is achieved successfully, the data are gridded and presented in this greyscale format.

Geophysical techniques are a measurement of material properties. Detecting and mapping the desired targets requires a measurable contrast between the target and the surrounding ground material. Interpretation of geophysical data should be carried out by qualified and experienced personnel but remains inherently subjective.

#### Overview map



- Probable Archaeology
- Possible Archaeology
- Natural
- Agricultural (Strong)
- Agricultural (Weak)
- Modern
- Ferrous Point
- Ferrous Spread
- Magnetic Interference
- Extraction
- Unable to Survey
- Agricultural (Strong)
- Agricultural (Weak)
- Buried Utility



**atlas**  
geophysical  
Atlas Geophysical Ltd  
Garden House  
Heol Gledid  
Ystradgynlais  
Powys  
SA9 1LQ  
01639 874 104  
info@atlasgeo.co.uk

#### Project:

AG1803 Botely West

#### Client:

Photovolt Development Partners  
GmbH

Project:  
AG1803

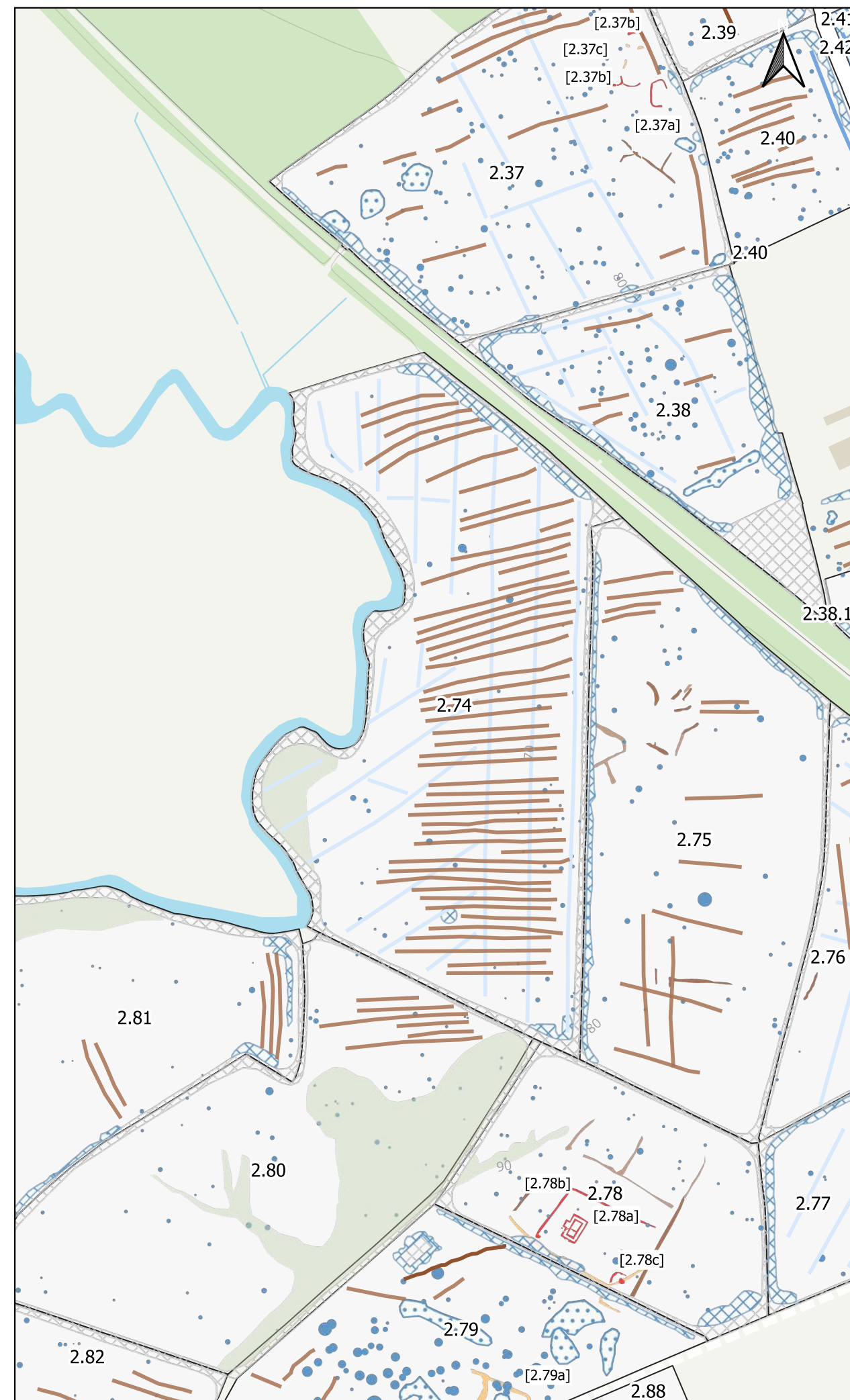
Date:  
November 2024

Scale:  
1 : 4000 @A3

Sheet:

Field 2.71





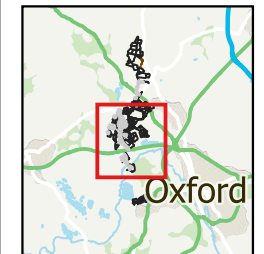
### General Notes & Key

For this geophysical investigation, the fluxgate gradiometer array manufactured by Sensoys (Germany) was used. The sensors were mounted on a wheeled frame approximately 0.25-1.0 m apart with positional data provided by an RTK GNSS.

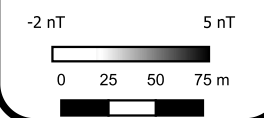
A small amount of post-acquisition processing is required to extract and visualise useful information from the acquired data. Once this is achieved successfully, the data are gridded and presented in this greyscale format.

Geophysical techniques are a measurement of material properties. Detecting and mapping the desired targets requires a measurable contrast between the target and the surrounding ground material. Interpretation of geophysical data should be carried out by qualified and experienced personnel but remains inherently subjective.

#### Overview map



- Probable Archaeology
- Possible Archaeology
- Natural
- Agricultural (Strong)
- Agricultural (Weak)
- Ferrous Point
- Ferrous Spread
- Magnetic Interference
- Extraction
- Unable to Survey
- Agricultural (Strong)
- Agricultural (Weak)
- Possible land drain
- Buried Utility



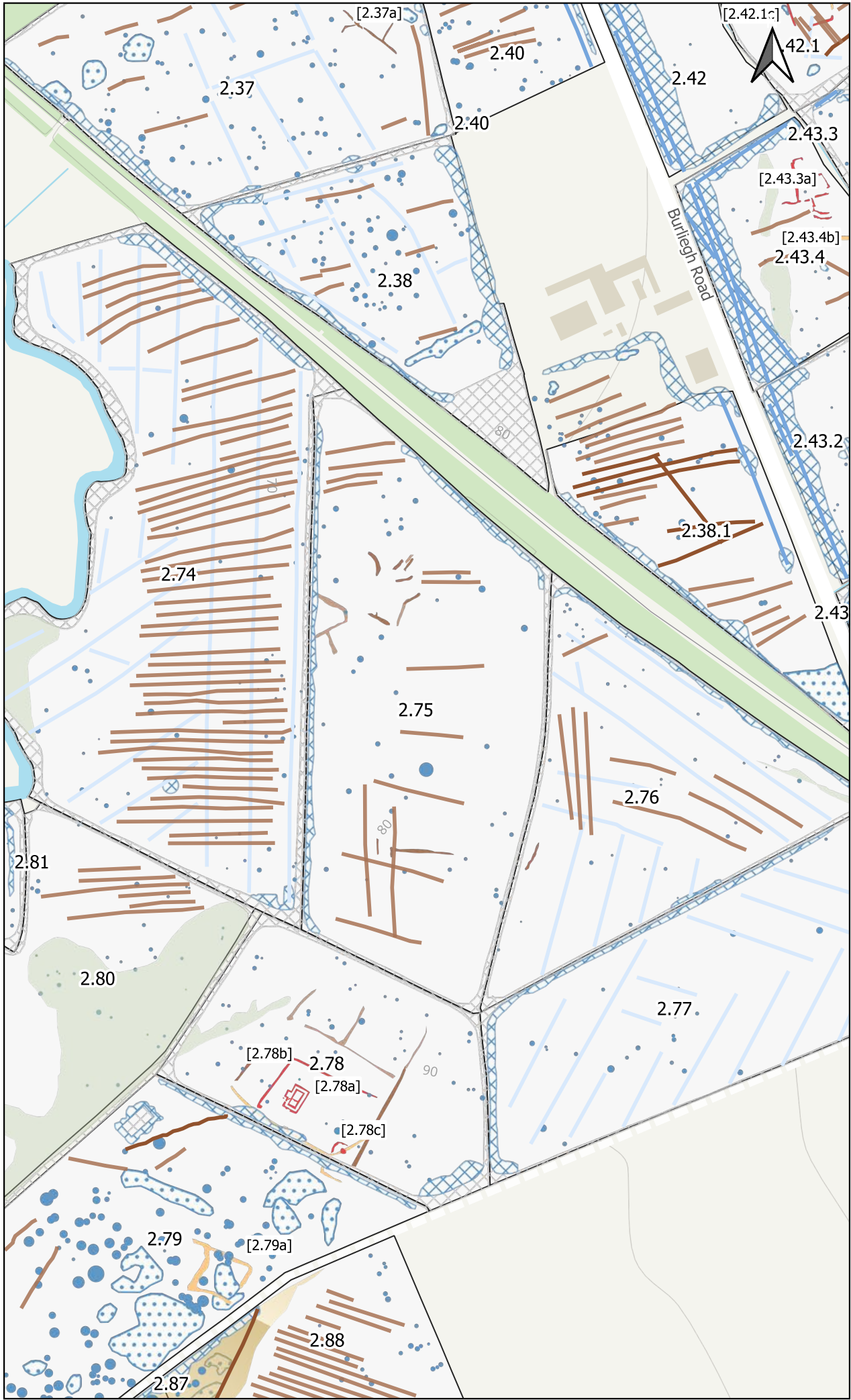
**atlas** geophysical  
Atlas Geophysical Ltd  
Garden House  
Heol Gledid  
Ystradgynlais  
Powys  
SA9 1LQ  
01639 874 104  
info@atlasgeo.co.uk

**Project:**  
AG1803 Botely West

**Client:**  
Photovolt Development Partners GmbH

<b>Project:</b> AG1803	<b>Sheet:</b> Field 2.74
<b>Date:</b> November 2024	
<b>Scale:</b> 1 : 4000 @A3	





### General Notes & Key

For this geophysical investigation, the fluxgate gradiometer array manufactured by Sensoys (Germany) was used. The sensors were mounted on a wheeled frame approximately 0.25-1.0 m apart with positional data provided by an RTK GNSS.

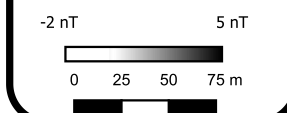
A small amount of post-acquisition processing is required to extract and visualise useful information from the acquired data. Once this is achieved successfully, the data are gridded and presented in this greyscale format.

Geophysical techniques are a measurement of material properties. Detecting and mapping the desired targets requires a measurable contrast between the target and the surrounding ground material. Interpretation of geophysical data should be carried out by qualified and experienced personnel but remains inherently subjective.

#### Overview map



- Probable Archaeology
- Possible Archaeology
- Natural
- Agricultural (Strong)
- Agricultural (Weak)
- Ferrous Point
- Ferrous Spread
- Magnetic Interference
- Extraction
- Unable to Survey
- Agricultural (Strong)
- Agricultural (Weak)
- Possible land drain
- Buried Utility



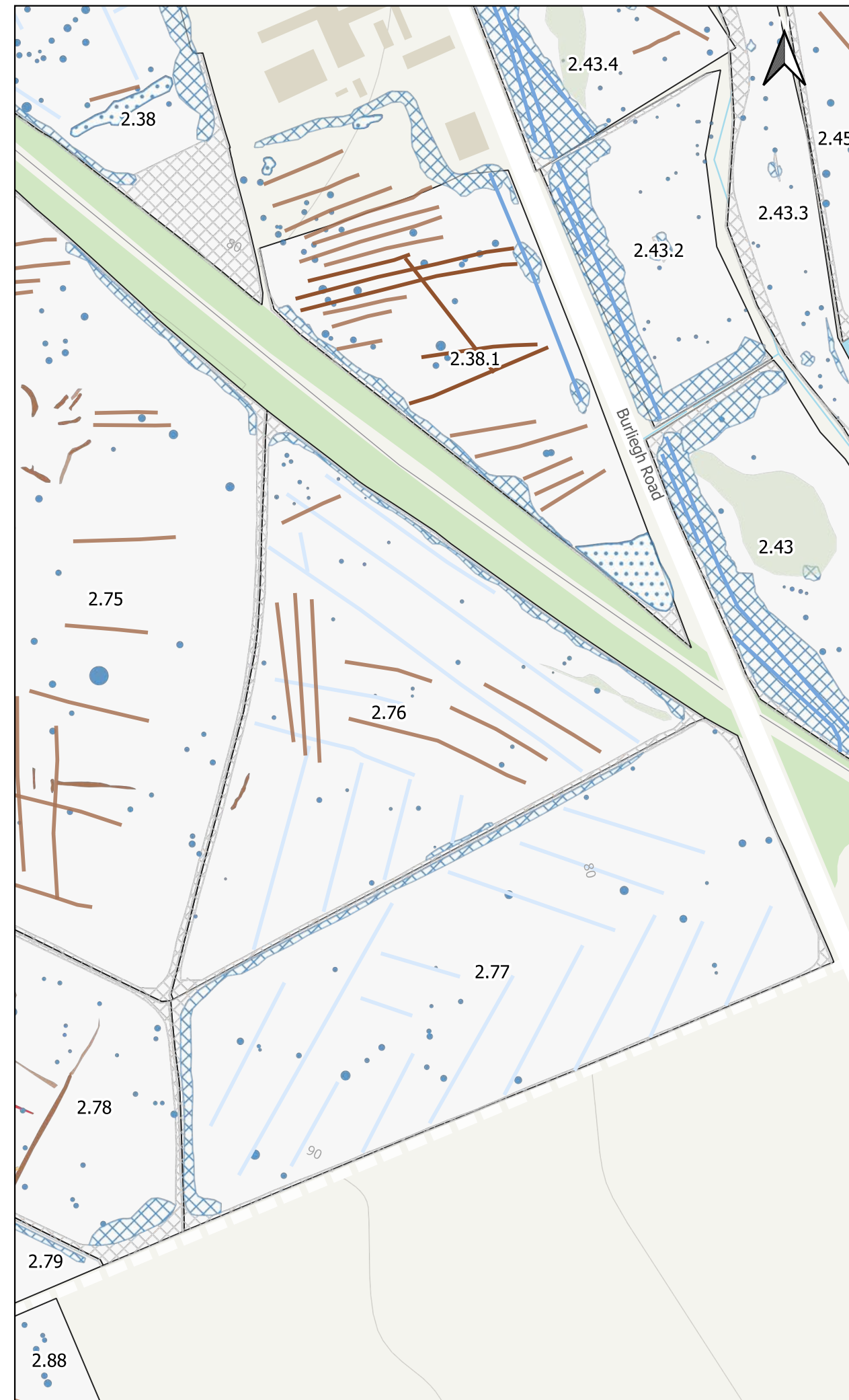
**atlas** geophysical  
Atlas Geophysical Ltd  
Garden House  
Heol Gledid  
Ystradgynlais  
Powys  
SA9 1LQ  
01639 874 104  
info@atlasgeo.co.uk

**Project:**  
AG1803 Botely West

**Client:**  
Photovolt Development Partners GmbH

<b>Project:</b> AG1803	<b>Sheet:</b> Field 2.75
<b>Date:</b> November 2024	
<b>Scale:</b> 1 : 4000 @A3	





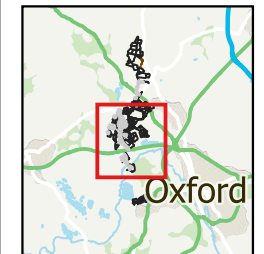
#### General Notes & Key

For this geophysical investigation, the fluxgate gradiometer array manufactured by Sensoys (Germany) was used. The sensors were mounted on a wheeled frame approximately 0.25- 1.0 m apart with positional data provided by an RTK GNSS.

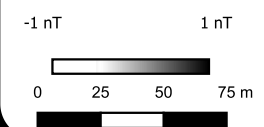
A small amount of post-acquisition processing is required to extract and visualise useful information from the acquired data. Once this is achieved successfully, the data are gridded and presented in this greyscale format.

Geophysical techniques are a measurement of material properties. Detecting and mapping the desired targets requires a measurable contrast between the target and the surrounding ground material. Interpretation of geophysical data should be carried out by qualified and experienced personnel but remains inherently subjective.

#### Overview map



- Probable Archaeology
- Possible Archaeology
- Natural
- Agricultural (Strong)
- Agricultural (Weak)
- Ferrous Point
- Ferrous Spread
- Magnetic Interference
- Unable to Survey
- Agricultural (Strong)
- Agricultural (Weak)
- Possible land drain
- Buried Utility

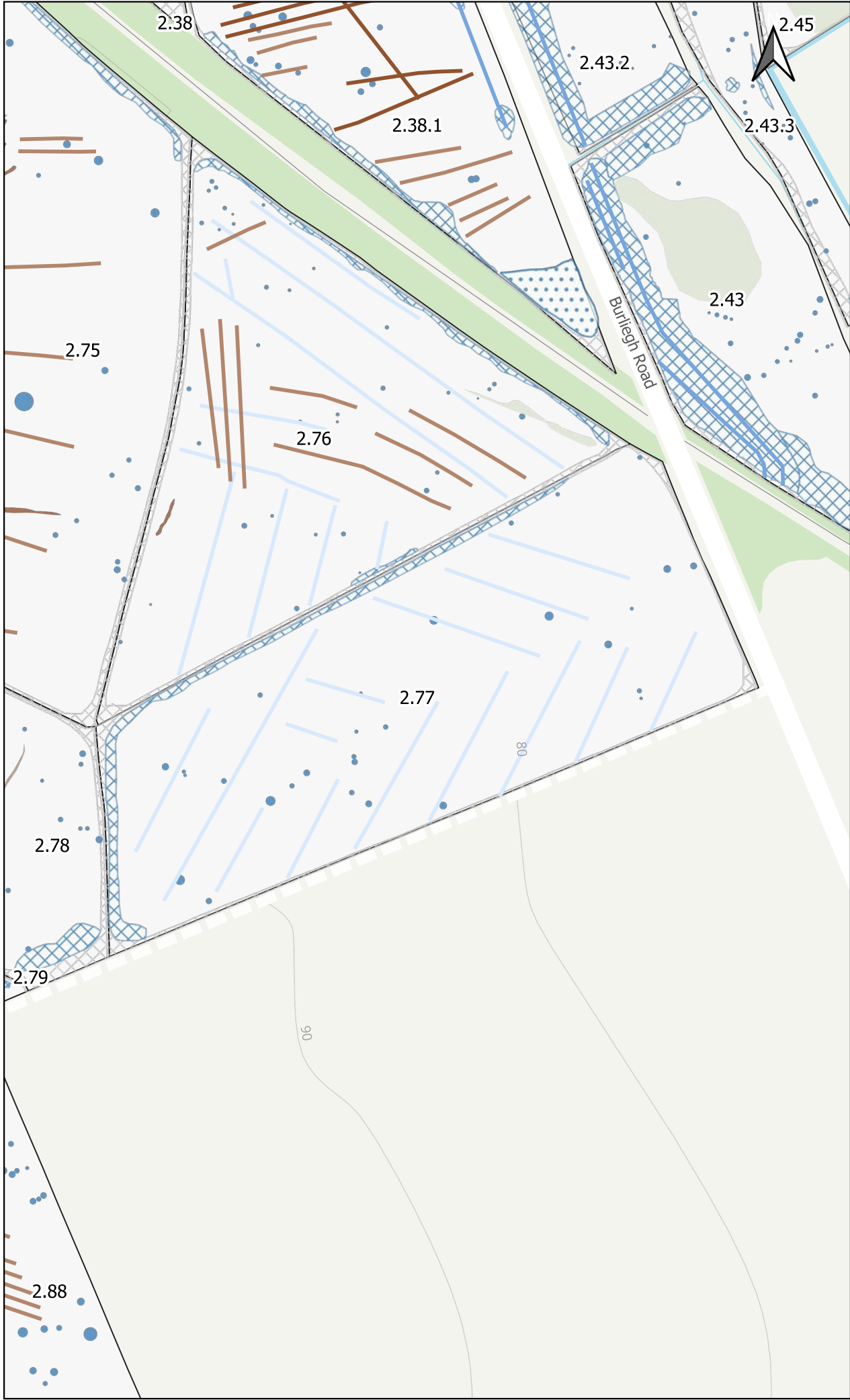


**atlas**  
geophysical  
Atlas Geophysical Ltd  
Garden House  
Heol Gledid  
Ystradgynlais  
Powys  
SA9 1LQ  
01639 874 104  
info@atlasgeo.co.uk

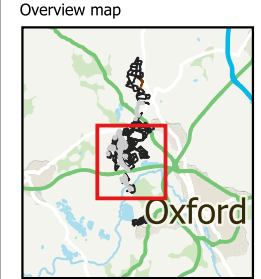
**Project:**  
AG1803 Botely West  
**Client:**  
Photovolt Development Partners GmbH

<b>Project:</b> AG1803	<b>Sheet:</b> Field 2.76
<b>Date:</b> November 2024	
<b>Scale:</b> 1 : 3000 @A3	

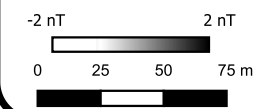




**General Notes & Key**  
For this geophysical investigation, the fluxgate gradiometer array manufactured by Senoys (Germany) was used.  
The sensors were mounted on a wheeled frame approximately 0.25- 1.0 m apart with positional data provided by an RTK GNSS.  
A small amount of post-acquisition processing is required to extract and visualise useful information from the acquired data. Once this is achieved successfully, the data are gridded and presented in this greyscale format.  
Geophysical techniques are a measurement of material properties. Detecting and mapping the desired targets requires a measurable contrast between the target and the surrounding ground material. Interpretation of geophysical data should be carried out by qualified and experienced personnel but remains inherently subjective.



- Natural
- Agricultural (Strong)
- Agricultural (Weak)
- Ferrous Point
- Ferrous Spread
- Magnetic Interference
- Unable to Survey
- Agricultural (Strong)
- Agricultural (Weak)
- Possible land drain
- Buried Utility

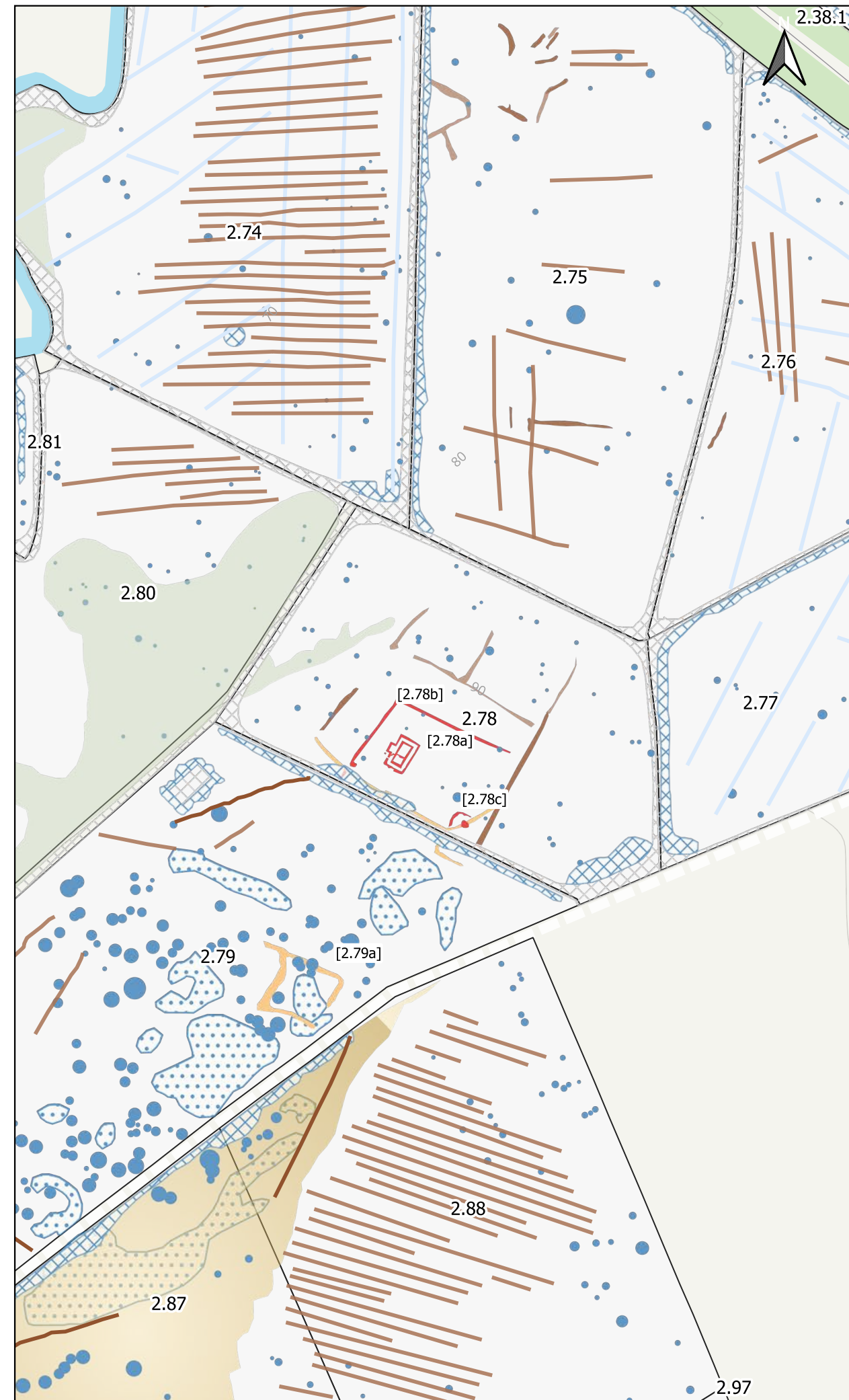


**atlas**  
geophysical  
Atlas Geophysical Ltd  
Garden House  
Heol Gledid  
Ystradgynlais  
Powys  
SA9 1LQ  
01639 874 104  
info@atlasgeo.co.uk

**Project:**  
AG1803 Botely West  
**Client:**  
Photovolt Development Partners GmbH

<b>Project:</b> AG1803	<b>Sheet:</b> Field 2.77
<b>Date:</b> November 2024	
<b>Scale:</b> 1 : 3000 @A3	





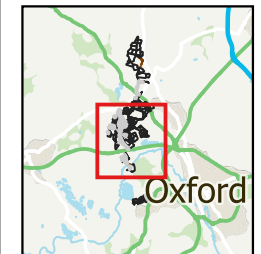
### General Notes & Key

For this geophysical investigation, the fluxgate gradiometer array manufactured by Senosys (Germany) was used. The sensors were mounted on a wheeled frame approximately 0.25-1.0 m apart with positional data provided by an RTK GNSS.

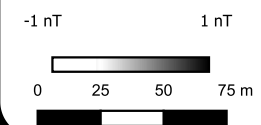
A small amount of post-acquisition processing is required to extract and visualise useful information from the acquired data. Once this is achieved successfully, the data are gridded and presented in this greyscale format.

Geophysical techniques are a measurement of material properties. Detecting and mapping the desired targets requires a measurable contrast between the target and the surrounding ground material. Interpretation of geophysical data should be carried out by qualified and experienced personnel but remains inherently subjective.

#### Overview map



- Probable Archaeology
- Possible Archaeology
- Natural
- Agricultural (Strong)
- Agricultural (Weak)
- Ferrous Point
- Ferrous Spread
- Magnetic Interference
- Extraction
- Unable to Survey
- Agricultural (Strong)
- Agricultural (Weak)
- Possible land drain

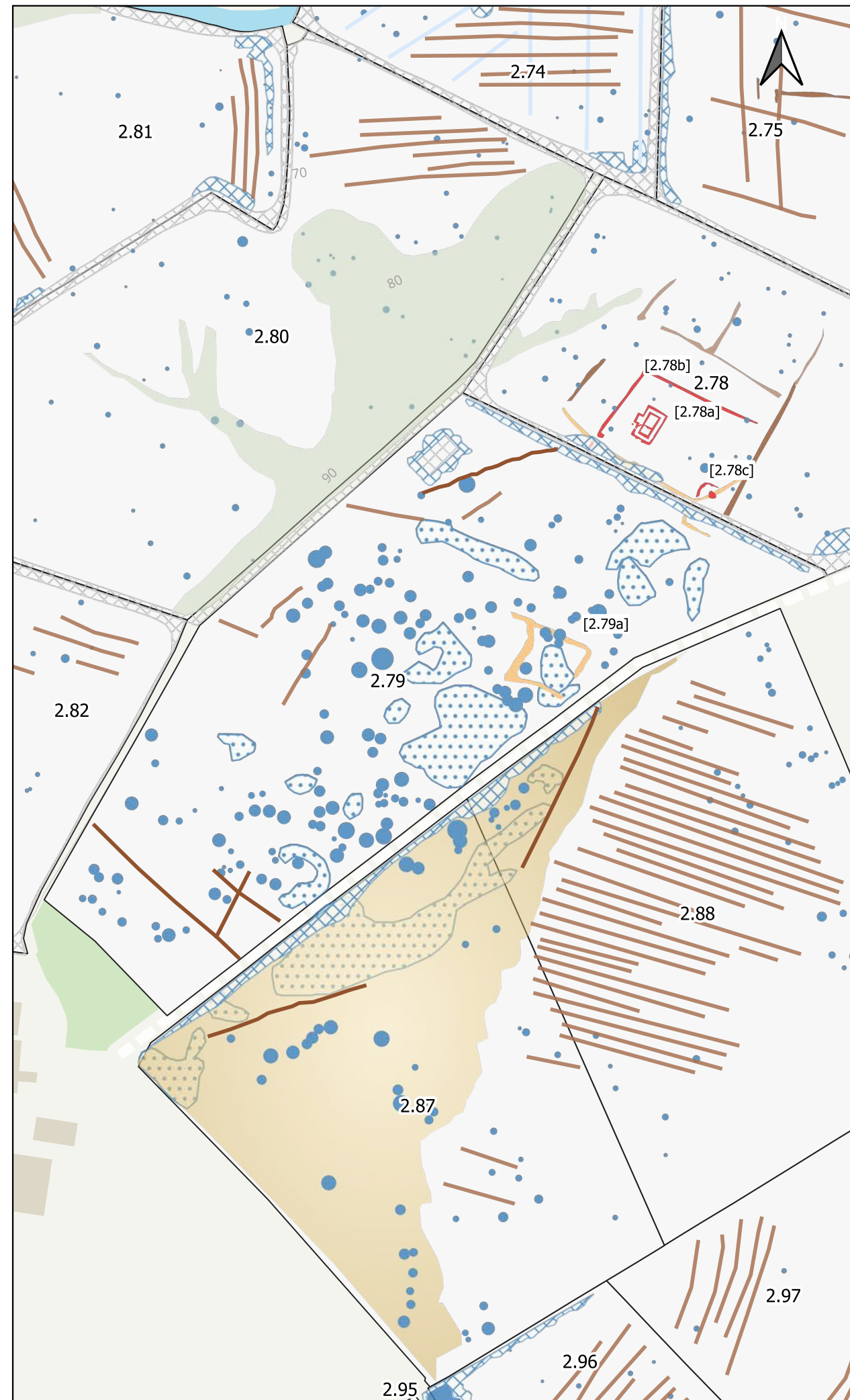


**atlas**  
geophysical  
Atlas Geophysical Ltd  
Garden House  
Heol Gledid  
Ystradgynlais  
Powys  
SA9 1LQ  
01639 874 104  
info@atlasgeo.co.uk

**Project:**  
AG1803 Botely West  
**Client:**  
Photovolt Development Partners GmbH

<b>Project:</b> AG1803	<b>Sheet:</b> Field 2.78
<b>Date:</b> November 2024	
<b>Scale:</b> 1 : 3000 @A3	





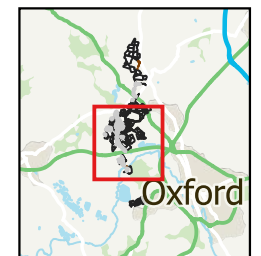
### General Notes & Key

For this geophysical investigation, the fluxgate gradiometer array manufactured by Senoys (Germany) was used. The sensors were mounted on a wheeled frame approximately 0.25- 1.0 m apart with positional data provided by an RTK GNSS.

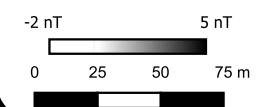
A small amount of post-acquisition processing is required to extract and visualise useful information from the acquired data. Once this is achieved successfully, the data are gridded and presented in this greyscales format.

Geophysical techniques are a measurement of material properties. Detecting and mapping the desired targets requires a measurable contrast between the target and the surrounding ground material. Interpretation of geophysical data should be carried out by qualified and experienced personnel but remains inherently subjective.

#### Overview map



- Probable Archaeology
- Possible Archaeology
- Natural
- Agricultural (Strong)
- Agricultural (Weak)
- Ferrous Point
- Ferrous Spread
- Magnetic Interference
- Extraction
- Unable to Survey
- Agricultural (Strong)
- Agricultural (Weak)
- Possible land drain

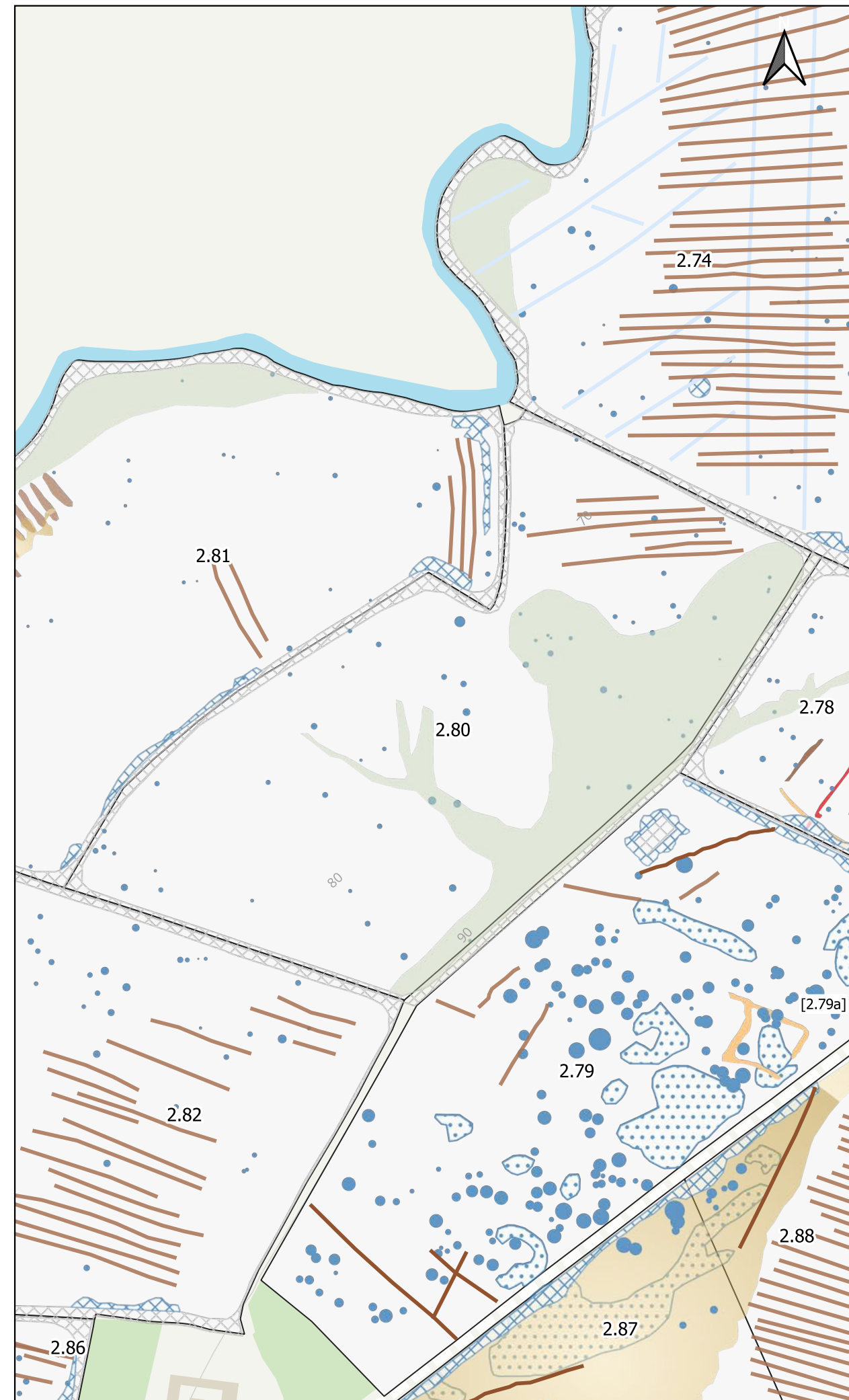
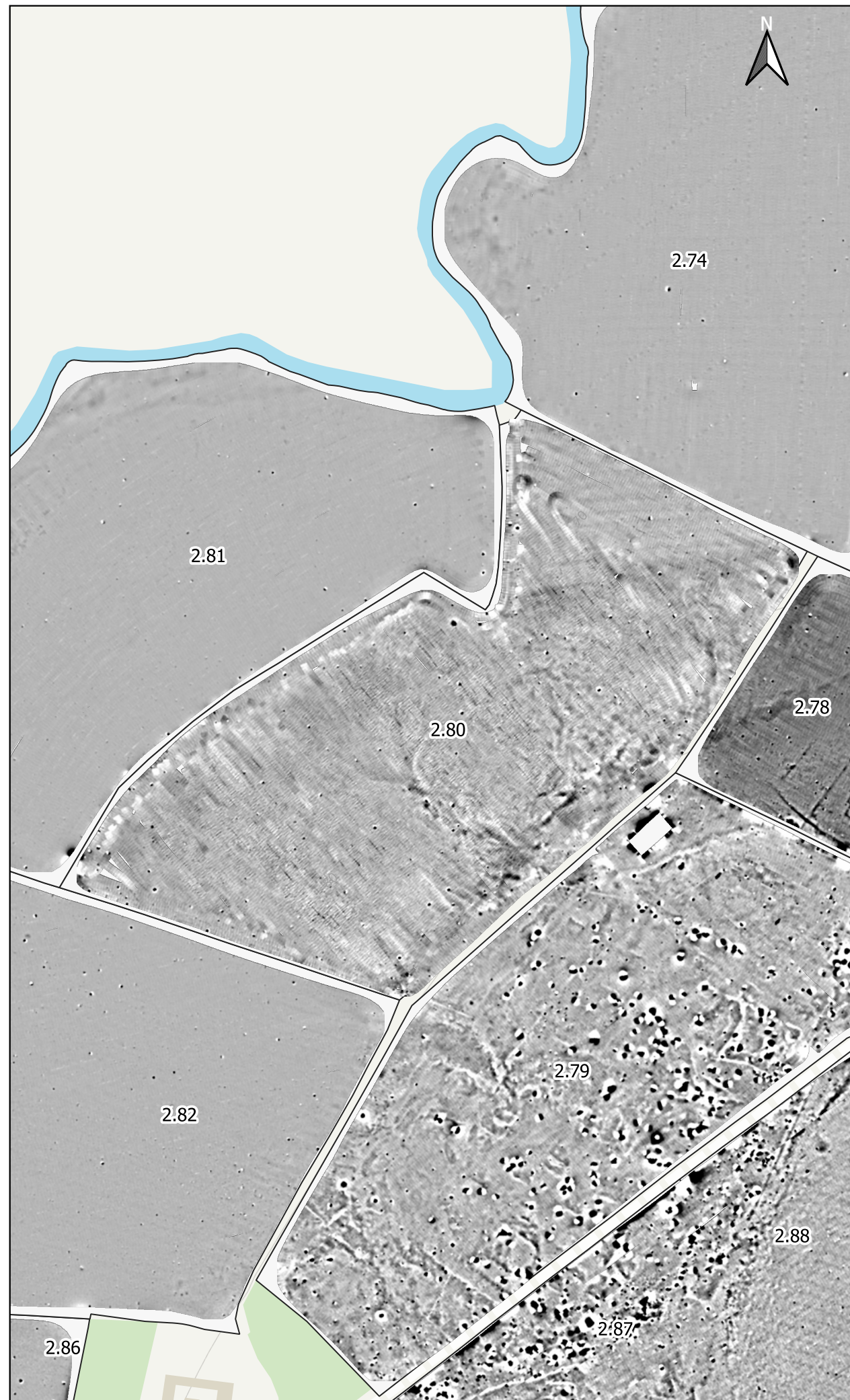


**atlas**  
geophysical  
Atlas Geophysical Ltd  
Garden House  
Heol Gledid  
Ystradgynlais  
Powys  
SA9 1LQ  
01639 874 104  
info@atlasgeo.co.uk

**Project:**  
AG1803 Botely West  
**Client:**  
Photovolt Development Partners GmbH

<b>Project:</b> AG1803	<b>Sheet:</b> Field 2.79
<b>Date:</b> November 2024	
<b>Scale:</b> 1 : 3000 @A3	





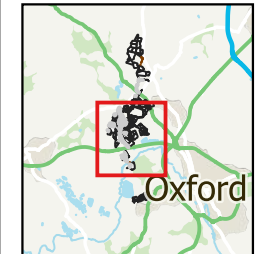
### General Notes & Key

For this geophysical investigation, the fluxgate gradiometer array manufactured by Sensoys (Germany) was used. The sensors were mounted on a wheeled frame approximately 0.25- 1.0 m apart with positional data provided by an RTK GNSS.

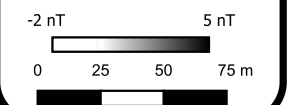
A small amount of post-acquisition processing is required to extract and visualise useful information from the acquired data. Once this is achieved successfully, the data are gridded and presented in this greyscale format.

Geophysical techniques are a measurement of material properties. Detecting and mapping the desired targets requires a measurable contrast between the target and the surrounding ground material. Interpretation of geophysical data should be carried out by qualified and experienced personnel but remains inherently subjective.

#### Overview map



- Probable Archaeology
- Possible Archaeology
- Natural
- Agricultural (Strong)
- Agricultural (Weak)
- Ferrous Point
- Ferrous Spread
- Magnetic Interference
- Extraction
- Unable to Survey
- Agricultural (Strong)
- Agricultural (Weak)
- Possible land drain



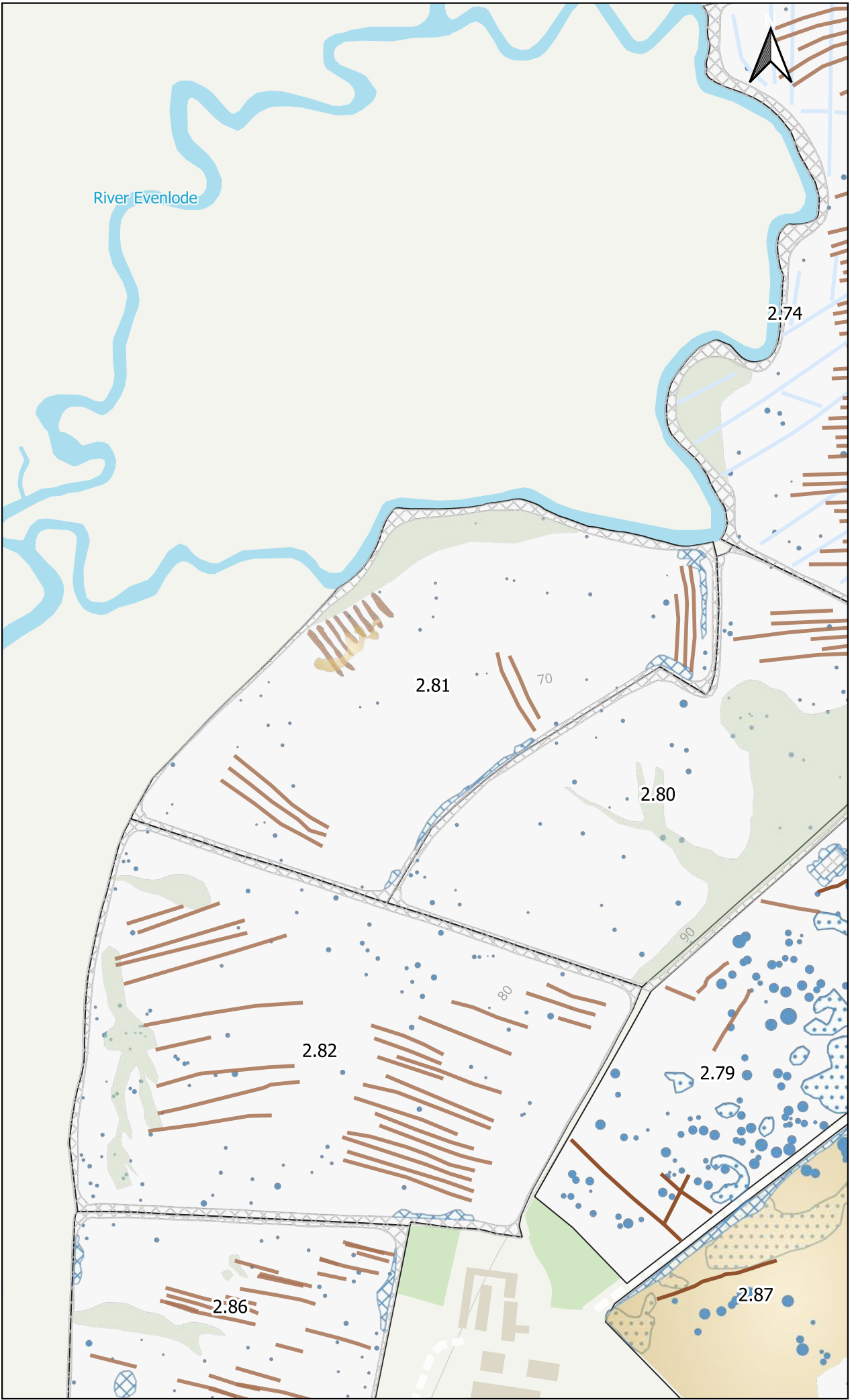
**atlas** geophysical  
Atlas Geophysical Ltd  
Garden House  
Heol Gleddd  
Ystradgynlais  
Powys  
SA9 1LQ  
01639 874 104  
info@atlasgeo.co.uk

**Project:**  
AG1803 Botely West

**Client:**  
Photovolt Development Partners GmbH

<b>Project:</b> AG1803	<b>Sheet:</b> Field 2.80
<b>Date:</b> November 2024	
<b>Scale:</b> 1 : 3000 @A3	

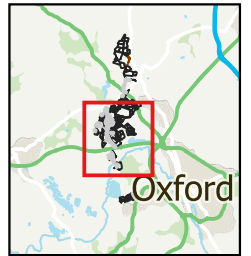




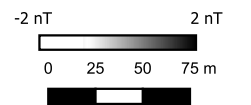
**General Notes & Key**  
For this geophysical investigation, the fluxgate gradiometer array manufactured by Senoys (Germany) was used.  
The sensors were mounted on a wheeled frame approximately 0.25- 1.0 m apart with positional data provided by an RTK GNSS.  
A small amount of post-acquisition processing is required to extract and visualise useful information from the acquired data. Once this is achieved successfully, the data are gridded and presented in this greyscales format.

Geophysical techniques are a measurement of material properties. Detecting and mapping the desired targets requires a measurable contrast between the target and the surrounding ground material. Interpretation of geophysical data should be carried out by qualified and experienced personnel but remains inherently subjective.

**Overview map**



- Natural
- Agricultural (Weak)
- Ferrous Point
- Ferrous Spread
- Magnetic Interference
- Extraction
- Unable to Survey
- Agricultural (Strong)
- Agricultural (Weak)
- Possible land drain

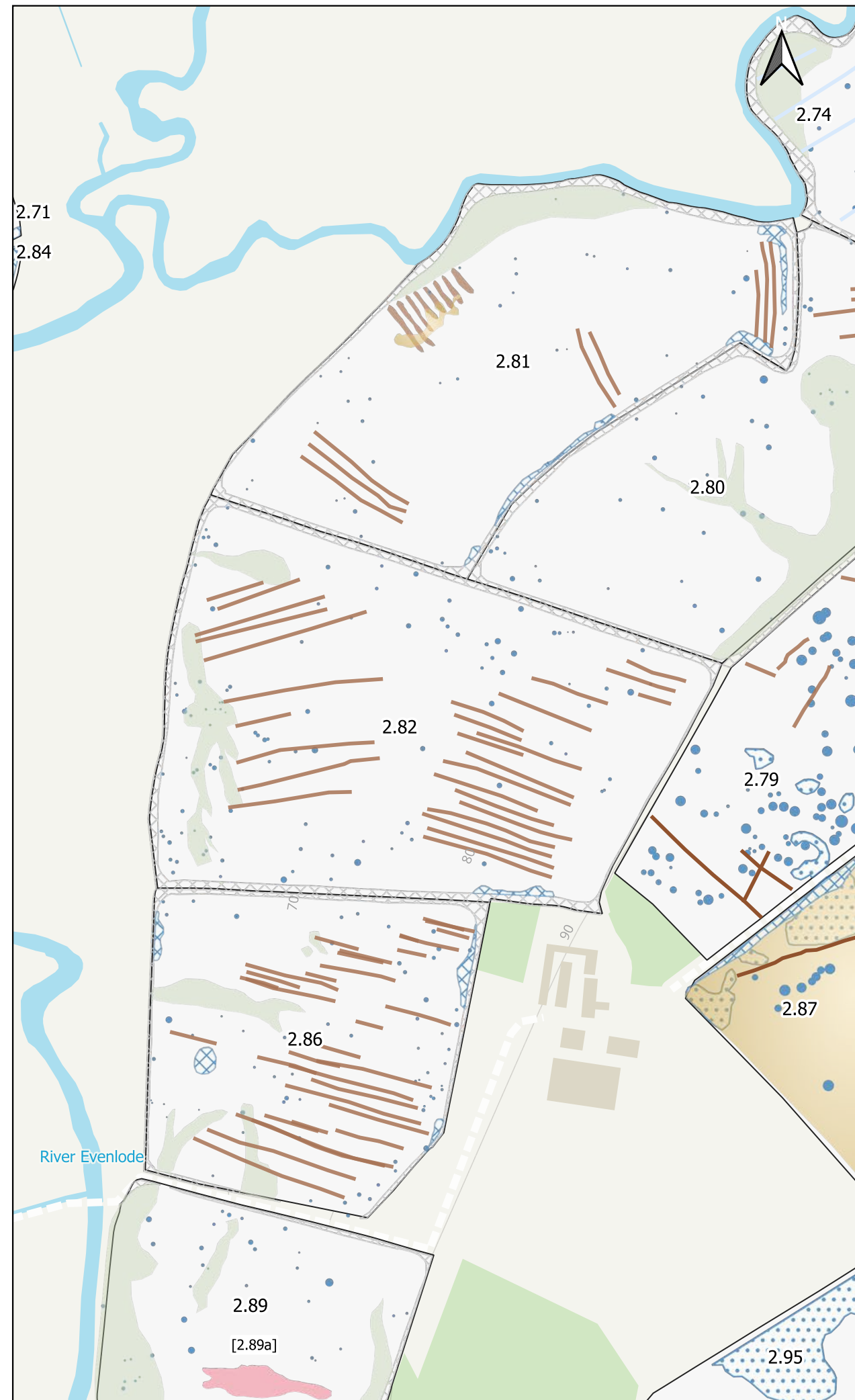


**atlas**  
geophysical  
Atlas Geophysical Ltd  
Garden House  
Heol Gledid  
Ystradgynlais  
Powys  
SA9 1LQ  
01639 874 104  
info@atlasgeo.co.uk

**Project:**  
AG1803 Botely West  
**Client:**  
Photovolt Development Partners GmbH

<b>Project:</b> AG1803	<b>Sheet:</b> Field 2.81
<b>Date:</b> November 2024	
<b>Scale:</b> 1 : 4000 @A3	





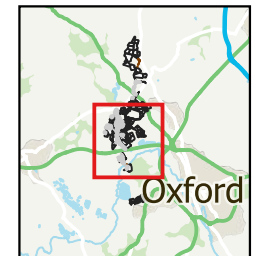
### General Notes & Key

For this geophysical investigation, the fluxgate gradiometer array manufactured by Sensoys (Germany) was used. The sensors were mounted on a wheeled frame approximately 0.25- 1.0 m apart with positional data provided by an RTK GNSS.

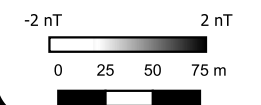
A small amount of post-acquisition processing is required to extract and visualise useful information from the acquired data. Once this is achieved successfully, the data are gridded and presented in this greyscales format.

Geophysical techniques are a measurement of material properties. Detecting and mapping the desired targets requires a measurable contrast between the target and the surrounding ground material. Interpretation of geophysical data should be carried out by qualified and experienced personnel but remains inherently subjective.

#### Overview map



- Natural
- Agricultural (Weak)
- Uncertain
- Ferrous Point
- Ferrous Spread
- Magnetic Interference
- Extraction
- Unable to Survey
- Agricultural (Strong)
- Agricultural (Weak)
- Possible land drain

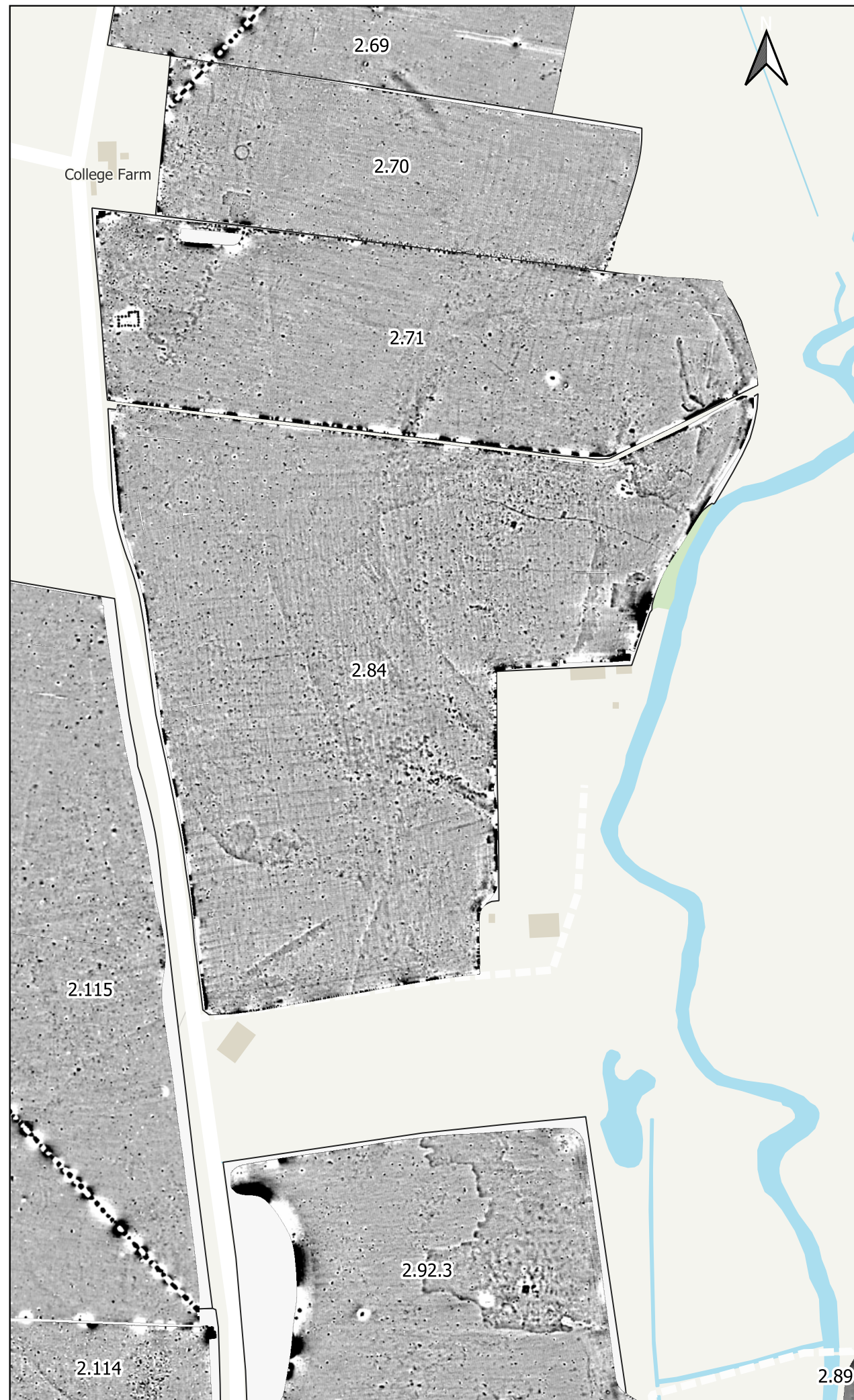


**atlas**  
geophysical  
Atlas Geophysical Ltd  
Garden House  
Heol Gledid  
Ystradgynlais  
Powys  
SA9 1LQ  
01639 874 104  
info@atlasgeo.co.uk

**Project:**  
AG1803 Botely West  
**Client:**  
Photovolt Development Partners  
GmbH

<b>Project:</b> AG1803	<b>Sheet:</b>
<b>Date:</b> November 2024	Field 2.82
<b>Scale:</b> 1 : 4000 @A3	





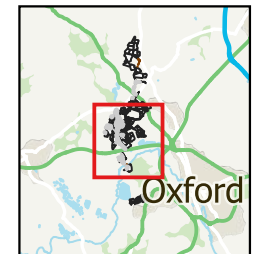
#### General Notes & Key

For this geophysical investigation, the fluxgate gradiometer array manufactured by Senoys (Germany) was used. The sensors were mounted on a wheeled frame approximately 0.25- 1.0 m apart with positional data provided by an RTK GNSS.

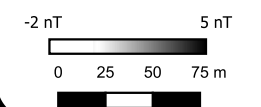
A small amount of post-acquisition processing is required to extract and visualise useful information from the acquired data. Once this is achieved successfully, the data are gridded and presented in this greyscale format.

Geophysical techniques are a measurement of material properties. Detecting and mapping the desired targets requires a measurable contrast between the target and the surrounding ground material. Interpretation of geophysical data should be carried out by qualified and experienced personnel but remains inherently subjective.

#### Overview map



- Probable Archaeology
- Possible Archaeology
- Natural
- Agricultural (Strong)
- Agricultural (Weak)
- Modern
- Ferrous Point
- Ferrous Spread
- Magnetic Interference
- Extraction
- Unable to Survey
- Agricultural (Strong)
- Agricultural (Weak)
- Buried Utility



**atlas** geophysical  
Atlas Geophysical Ltd  
Garden House  
Heol Gledid  
Ystradgynlais  
Powys  
SA9 1LQ  
01639 874 104  
info@atlasgeo.co.uk

#### Project:

AG1803 Botely West

#### Client:

Photovolt Development Partners GmbH

Project:  
AG1803

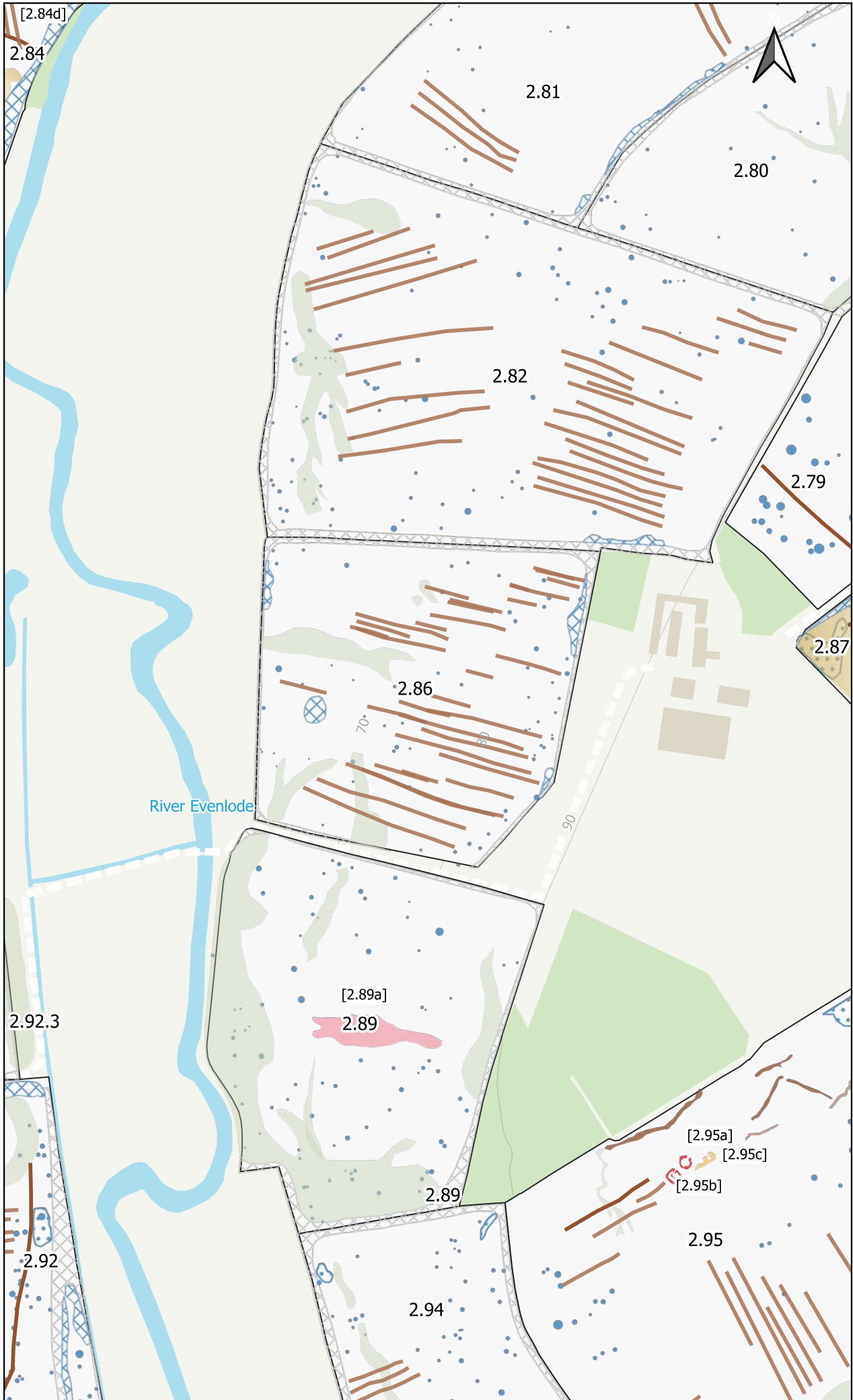
Date:  
November 2024

Scale:  
1 : 4000 @A3

Sheet:

Field 2.84





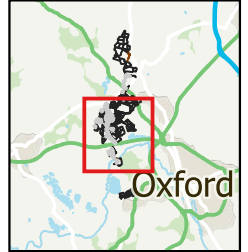
#### General Notes & Key

For this geophysical investigation, the fluxgate gradiometer array manufactured by Senoys (Germany) was used. The sensors were mounted on a wheeled frame approximately 0.25- 1.0 m apart with positional data provided by an RTK GNSS.

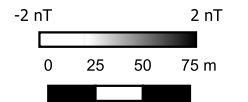
A small amount of post-acquisition processing is required to extract and visualise useful information from the acquired data. Once this is achieved successfully, the data are gridded and presented in this greyscales format.

Geophysical techniques are a measurement of material properties. Detecting and mapping the desired targets requires a measurable contrast between the target and the surrounding ground material. Interpretation of geophysical data should be carried out by qualified and experienced personnel but remains inherently subjective.

#### Overview map



- Probable Archaeology
- Possible Archaeology
- Natural
- Agricultural (Strong)
- Agricultural (Weak)
- Uncertain
- Ferrous Point
- Ferrous Spread
- Magnetic Interference
- Extraction
- Unable to Survey
- Agricultural (Strong)
- Agricultural (Weak)



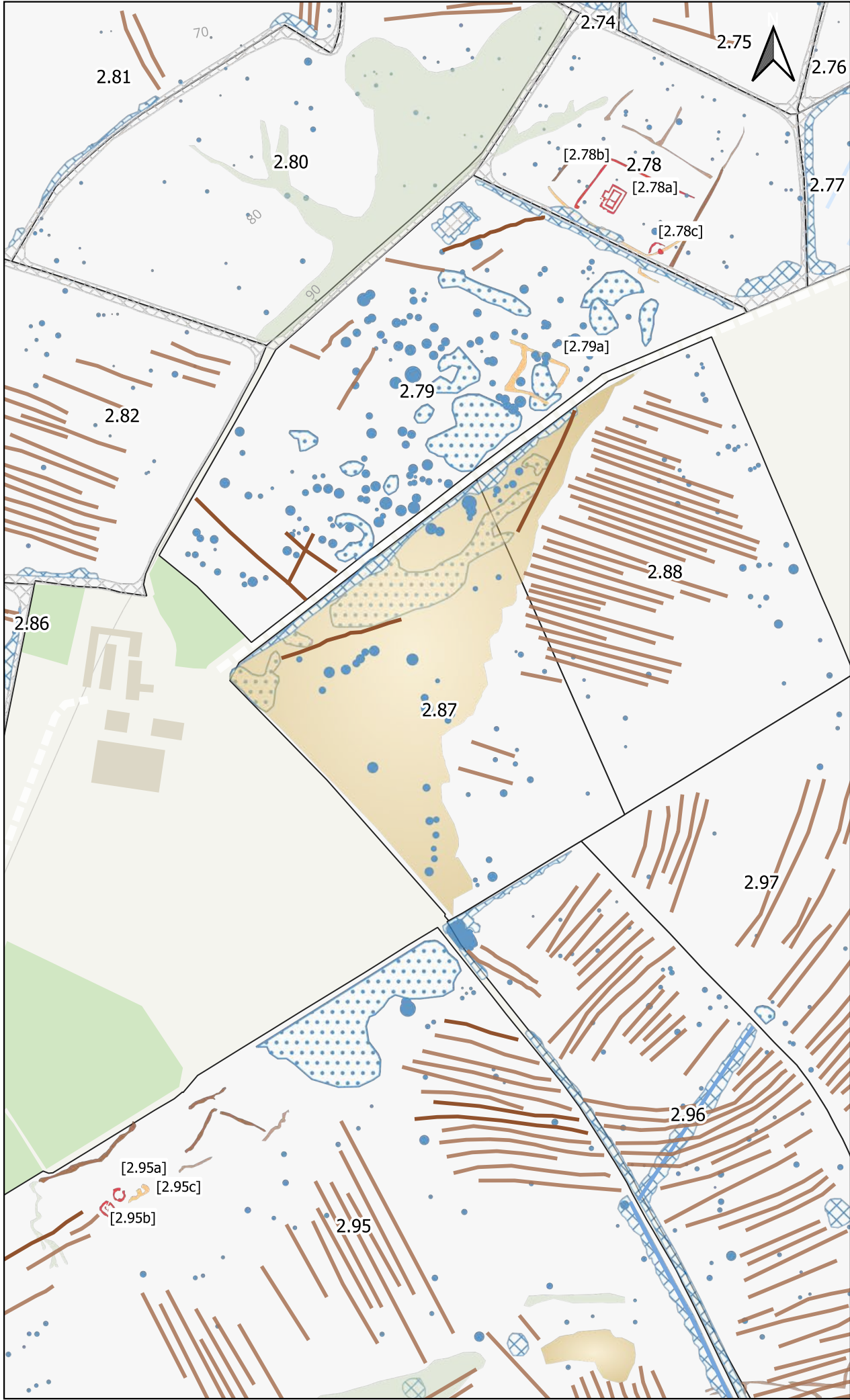
**atlas** geophysical  
Atlas Geophysical Ltd  
Garden House  
Heol Gledid  
Ystradgynlais  
Powys  
SA9 1LQ  
01639 874 104  
info@atlasgeo.co.uk

**Project:**  
AG1803 Botely West

**Client:**  
Photovolt Development Partners GmbH

<b>Project:</b> AG1803	<b>Sheet:</b>
<b>Date:</b> November 2024	Field 2.86
<b>Scale:</b> 1 : 4000 @A3	





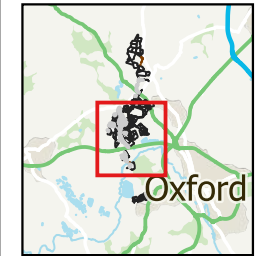
**General Notes & Key**

For this geophysical investigation, the fluxgate gradiometer array manufactured by Sensoys (Germany) was used. The sensors were mounted on a wheeled frame approximately 0.25- 1.0 m apart with positional data provided by an RTK GNSS.

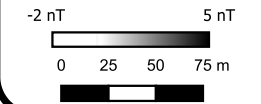
A small amount of post-acquisition processing is required to extract and visualise useful information from the acquired data. Once this is achieved successfully, the data are gridded and presented in this greyscale format.

Geophysical techniques are a measurement of material properties. Detecting and mapping the desired targets requires a measurable contrast between the target and the surrounding ground material. Interpretation of geophysical data should be carried out by qualified and experienced personnel but remains inherently subjective.

**Overview map**



- Probable Archaeology
- Possible Archaeology
- Natural
- Agricultural (Strong)
- Agricultural (Weak)
- Ferrous Point
- Ferrous Spread
- Magnetic Interference
- Extraction
- Unable to Survey
- Agricultural (Strong)
- Agricultural (Weak)
- Possible land drain
- Buried Utility

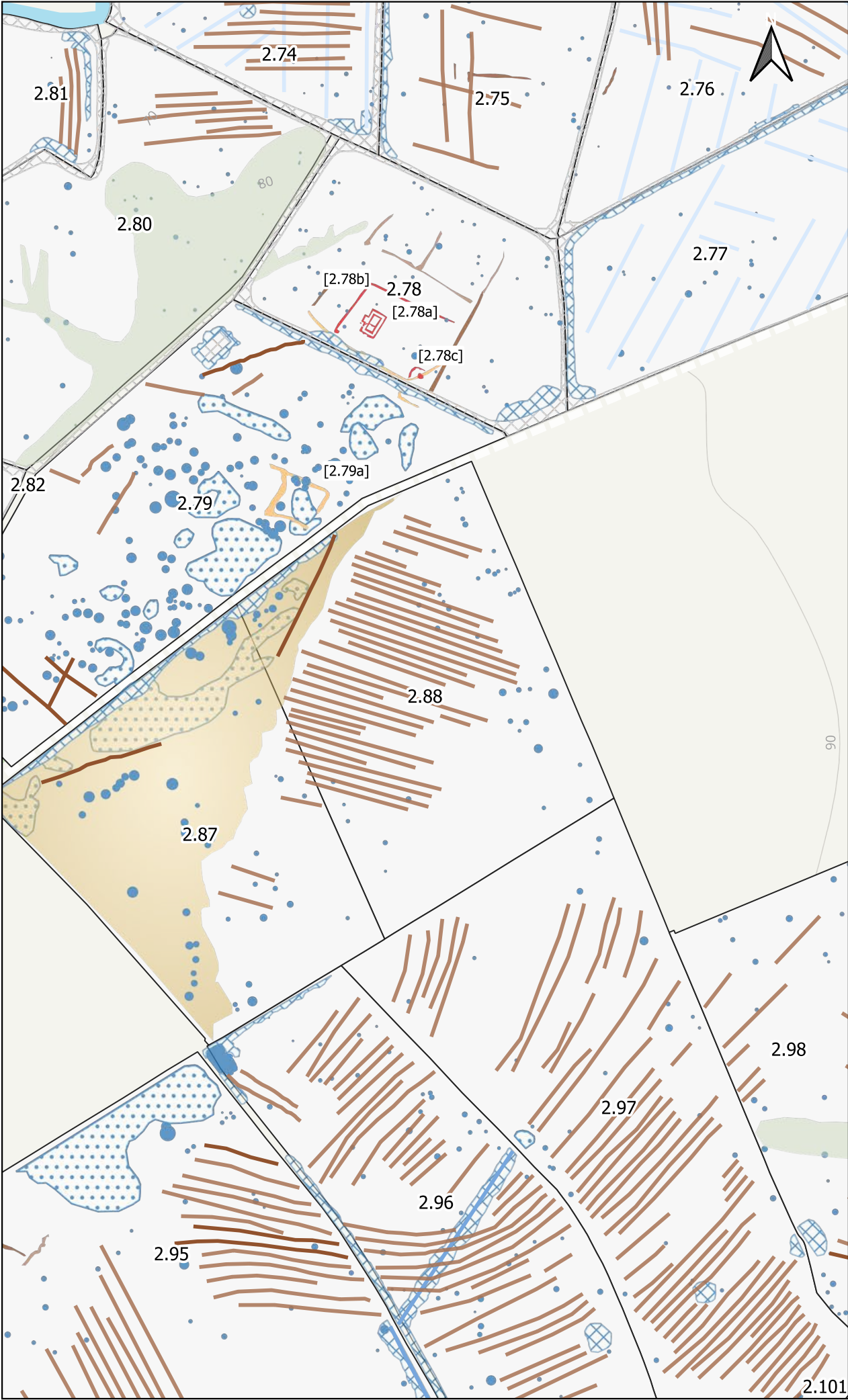


**atlas**  
geophysical  
Atlas Geophysical Ltd  
Garden House  
Heol Gledid  
Ystradgynlais  
Powys  
SA9 1LQ  
01639 874 104  
info@atlasgeo.co.uk

**Project:**  
AG1803 Botely West  
**Client:**  
Photovolt Development Partners GmbH

<b>Project:</b> AG1803	<b>Sheet:</b>
<b>Date:</b> November 2024	Field 2.87
<b>Scale:</b> 1 : 4000 @A3	

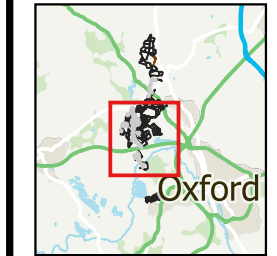




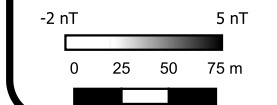
**General Notes & Key**  
For this geophysical investigation, the fluxgate gradiometer array manufactured by Senosys (Germany) was used.  
The sensors were mounted on a wheeled frame approximately 0.25- 1.0 m apart with positional data provided by an RTK GNSS.  
A small amount of post-acquisition processing is required to extract and visualise useful information from the acquired data. Once this is achieved successfully, the data are gridded and presented in this greyscale format.

Geophysical techniques are a measurement of material properties. Detecting and mapping the desired targets requires a measurable contrast between the target and the surrounding ground material. Interpretation of geophysical data should be carried out by qualified and experienced personnel but remains inherently subjective.

Overview map



- Probable Archaeology
- Possible Archaeology
- Natural
- Agricultural (Strong)
- Agricultural (Weak)
- Ferrous Point
- Ferrous Spread
- Magnetic Interference
- Extraction
- Unable to Survey
- Agricultural (Strong)
- Agricultural (Weak)
- Possible land drain
- Buried Utility

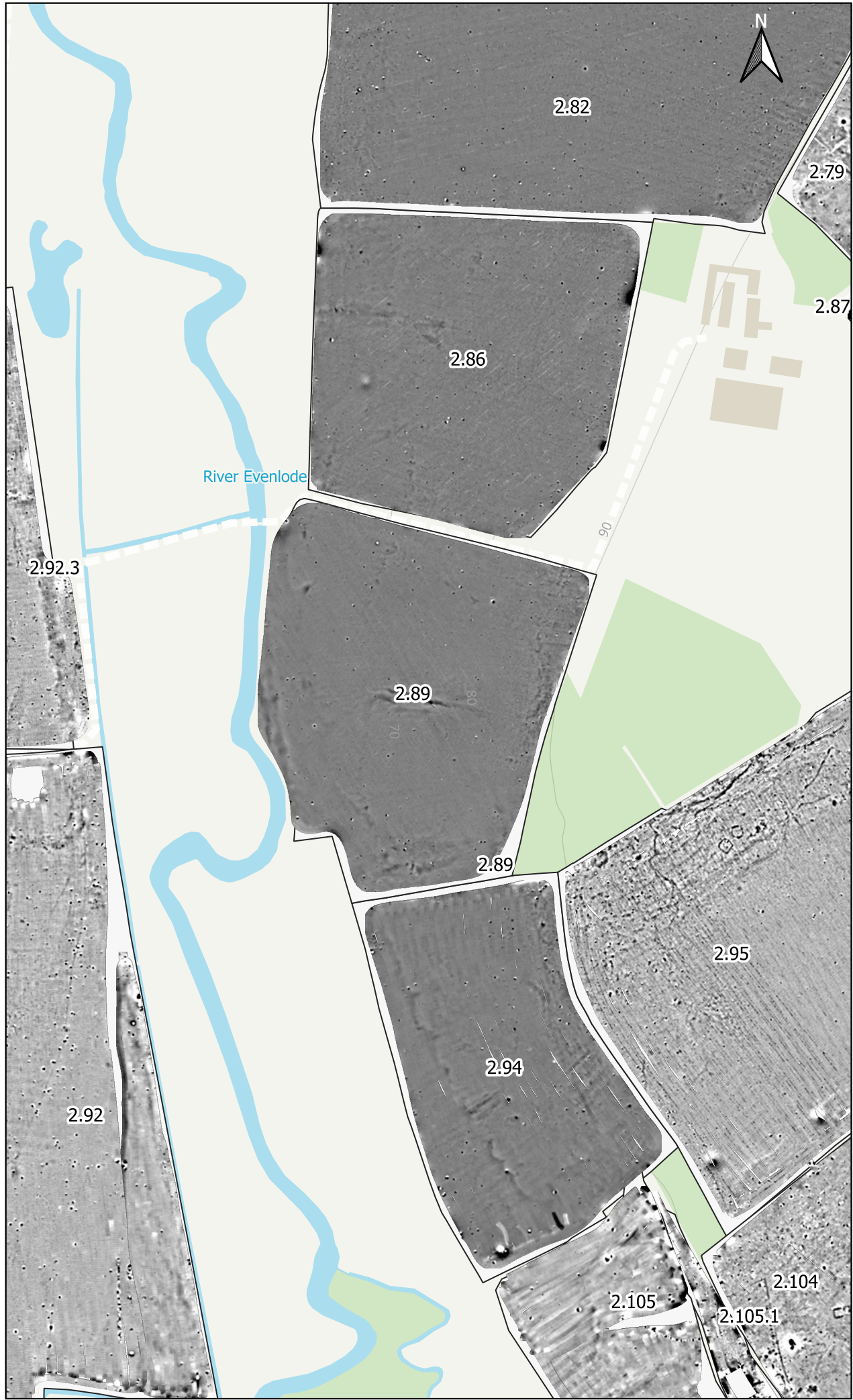


**atlas**  
geophysical  
Atlas Geophysical Ltd  
Garden House  
Heol Gledid  
Ystradgynlais  
Powys  
SA9 1LQ  
01639 874 104  
info@atlasgeo.co.uk

**Project:**  
AG1803 Botely West  
**Client:**  
Photovolt Development Partners GmbH

<b>Project:</b> AG1803	<b>Sheet:</b> Field 2.88
<b>Date:</b> November 2024	
<b>Scale:</b> 1 : 4000 @A3	

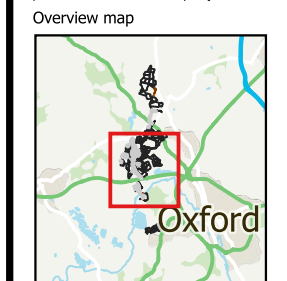




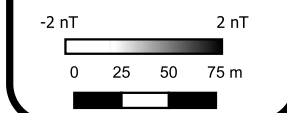
**General Notes & Key**  
For this geophysical investigation, the fluxgate gradiometer array manufactured by Senosys (Germany) was used.  
The sensors were mounted on a wheeled frame approximately 0.25- 1.0 m apart with positional data provided by an RTK GNSS.

A small amount of post-acquisition processing is required to extract and visualise useful information from the acquired data. Once this is achieved successfully, the data are gridded and presented in this greyscale format.

Geophysical techniques are a measurement of material properties. Detecting and mapping the desired targets requires a measurable contrast between the target and the surrounding ground material. Interpretation of geophysical data should be carried out by qualified and experienced personnel but remains inherently subjective.



- Probable Archaeology
- Possible Archaeology
- Natural
- Agricultural (Strong)
- Agricultural (Weak)
- Uncertain
- Ferrous Point
- Ferrous Spread
- Magnetic Interference
- Extraction
- Unable to Survey
- Agricultural (Strong)
- Agricultural (Weak)
- Buried Utility



**atlas**  
geophysical  
Atlas Geophysical Ltd  
Garden House  
Heol Gledid  
Ystradgynlais  
Powys  
SA9 1LQ  
01639 874 104  
info@atlasgeo.co.uk

**Project:**  
AG1803 Botely West  
**Client:**  
Photovolt Development Partners GmbH

<b>Project:</b> AG1803	<b>Sheet:</b> Field 2.89
<b>Date:</b> November 2024	
<b>Scale:</b> 1 : 4000 @A3	





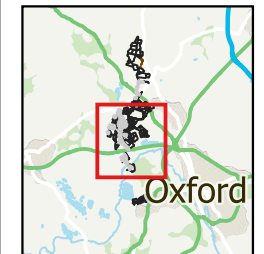
#### General Notes & Key

For this geophysical investigation, the fluxgate gradiometer array manufactured by Senoys (Germany) was used. The sensors were mounted on a wheeled frame approximately 0.25-1.0 m apart with positional data provided by an RTK GNSS.

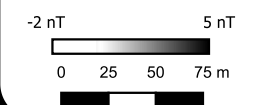
A small amount of post-acquisition processing is required to extract and visualise useful information from the acquired data. Once this is achieved successfully, the data are gridded and presented in this greyscales format.

Geophysical techniques are a measurement of material properties. Detecting and mapping the desired targets requires a measurable contrast between the target and the surrounding ground material. Interpretation of geophysical data should be carried out by qualified and experienced personnel but remains inherently subjective.

#### Overview map



- Probable Archaeology
- Possible Archaeology
- Natural
- Agricultural (Strong)
- Agricultural (Weak)
- Ferrous Point
- Ferrous Spread
- Magnetic Interference
- Extraction
- Unable to Survey
- Agricultural (Strong)
- Agricultural (Weak)
- Buried Utility



**atlas**  
geophysical  
Atlas Geophysical Ltd  
Garden House  
Heol Gledid  
Ystradgynlais  
Powys  
SA9 1LQ  
01639 874 104  
info@atlasgeo.co.uk

#### Project:

AG1803 Botely West

#### Client:

Photovolt Development Partners GmbH

Project:  
AG1803

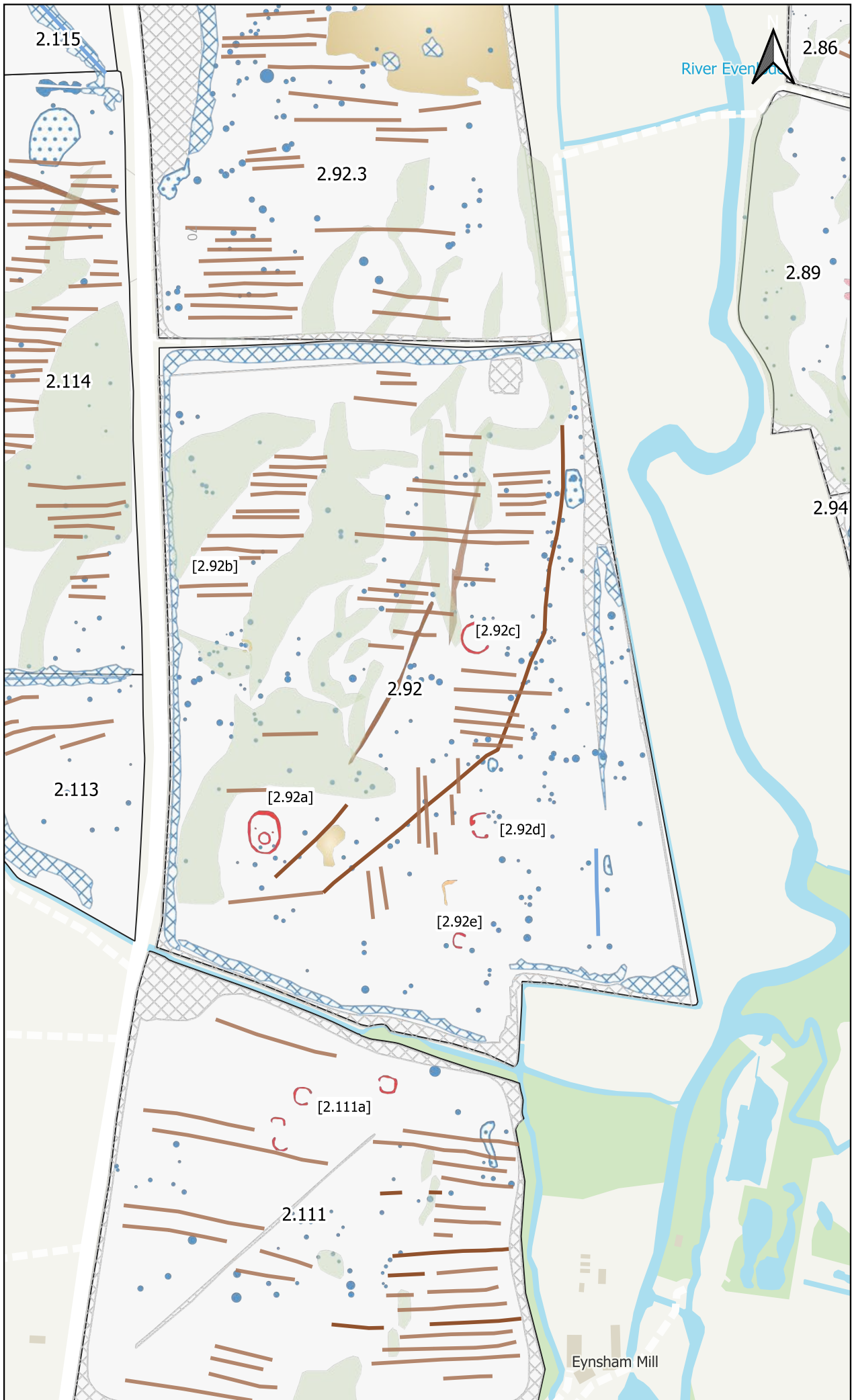
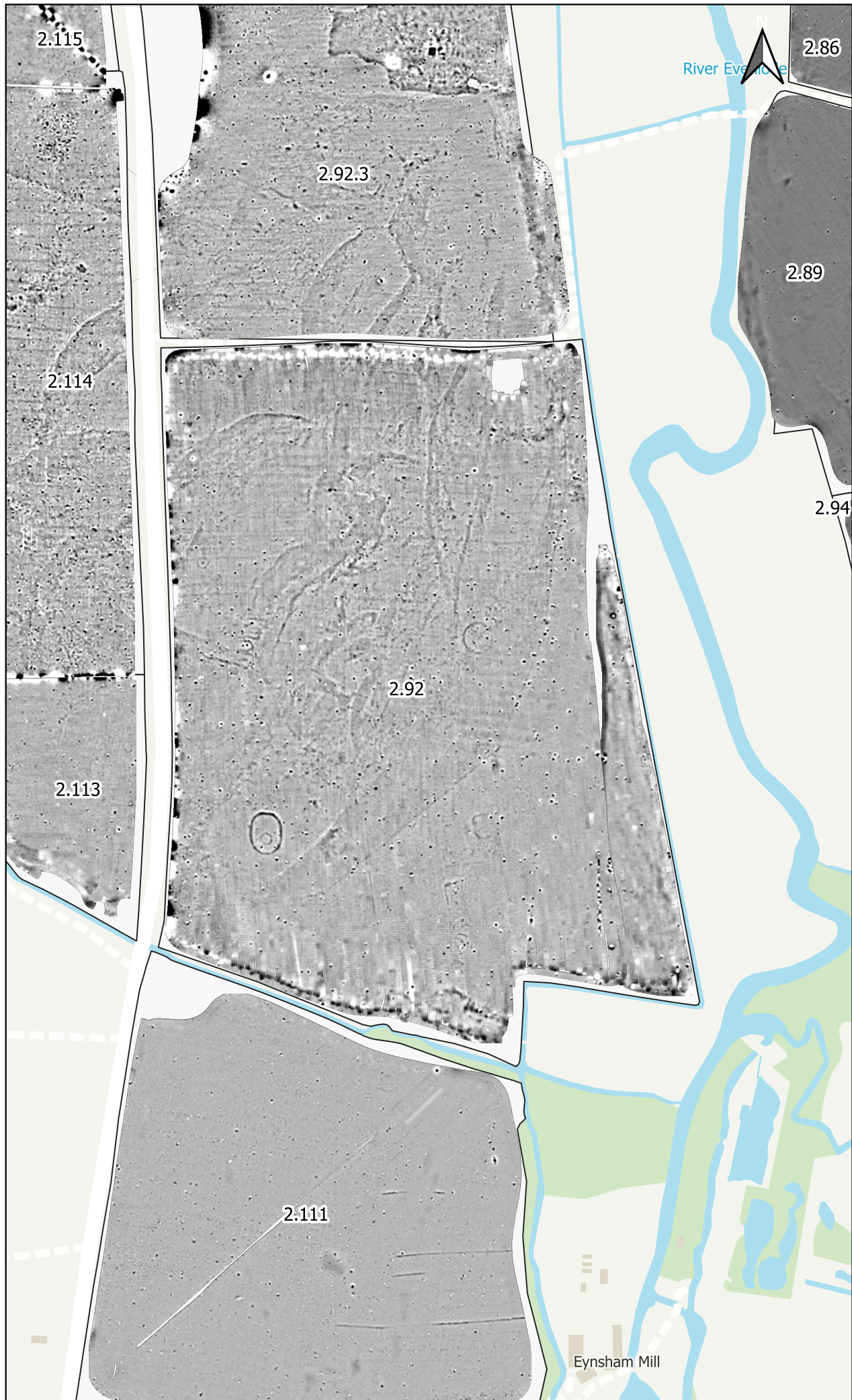
Date:  
November 2024

Scale:  
1 : 4000 @A3

Sheet:

Field 2.92.3





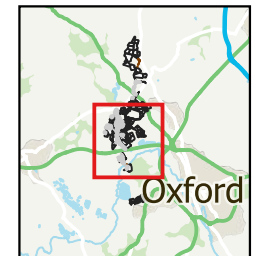
#### General Notes & Key

For this geophysical investigation, the fluxgate gradiometer array manufactured by Senoys (Germany) was used. The sensors were mounted on a wheeled frame approximately 0.25-1.0 m apart with positional data provided by an RTK GNSS.

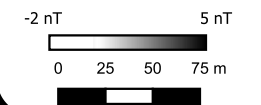
A small amount of post-acquisition processing is required to extract and visualise useful information from the acquired data. Once this is achieved successfully, the data are gridded and presented in this greyscale format.

Geophysical techniques are a measurement of material properties. Detecting and mapping the desired targets requires a measurable contrast between the target and the surrounding ground material. Interpretation of geophysical data should be carried out by qualified and experienced personnel but remains inherently subjective.

#### Overview map



- Probable Archaeology
- Possible Archaeology
- Natural
- Agricultural (Strong)
- Agricultural (Weak)
- Uncertain
- Ferrous Point
- Ferrous Spread
- Magnetic Interference
- Extraction
- Unable to Survey
- Agricultural (Strong)
- Agricultural (Weak)
- Buried Utility



**atlas**  
geophysical  
Atlas Geophysical Ltd  
Garden House  
Heol Gledid  
Ystradgynlais  
Powys  
SA9 1LQ  
01639 874 104  
info@atlasgeo.co.uk

#### Project:

AG1803 Botely West

#### Client:

Photovolt Development Partners  
GmbH

Project:  
AG1803

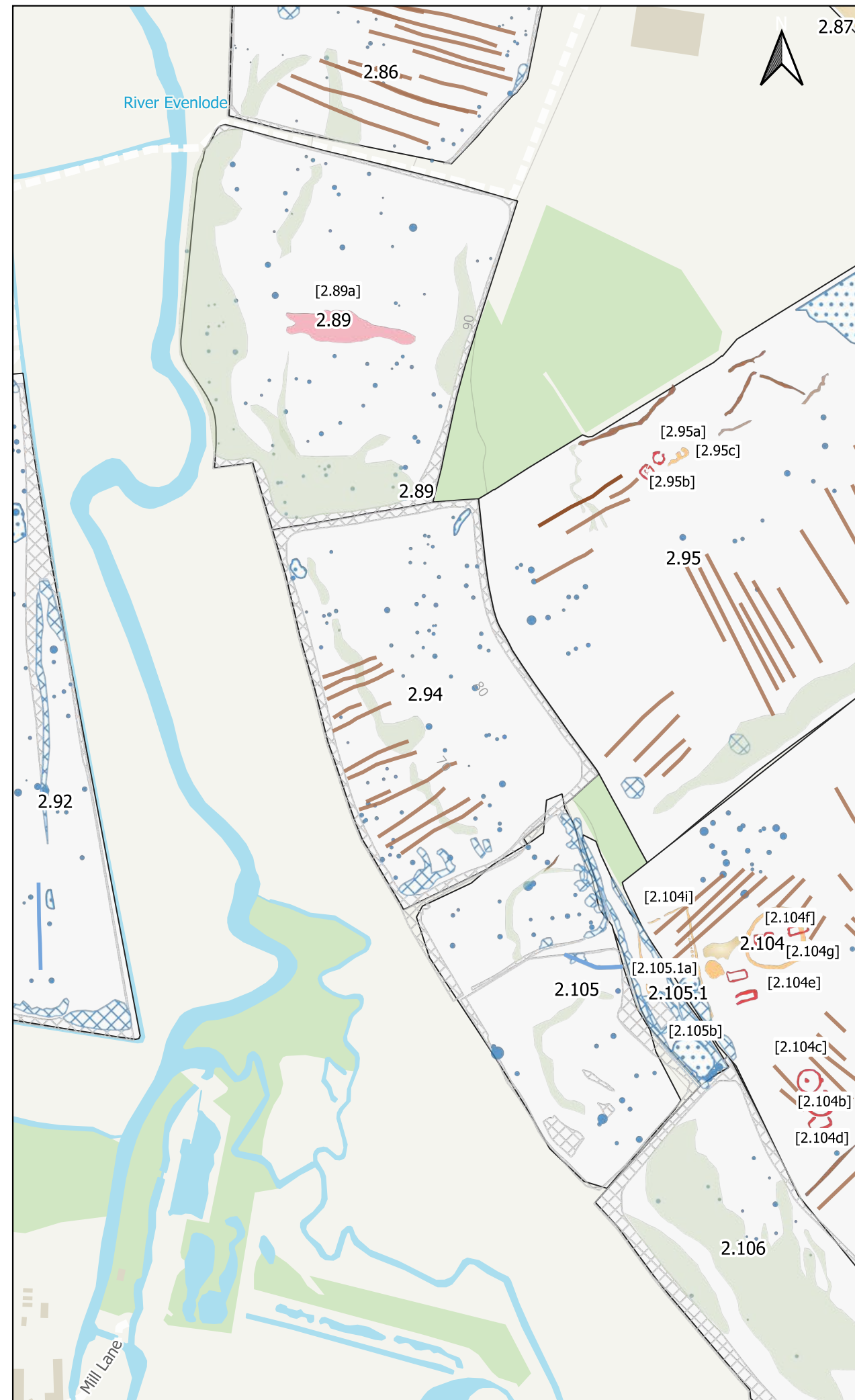
Date:  
November 2024

Scale:  
1 : 4000 @A3

Sheet:

Field 2.92





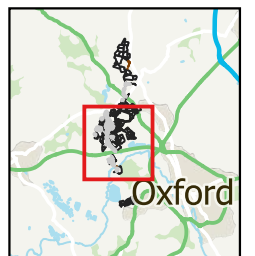
### General Notes & Key

For this geophysical investigation, the fluxgate gradiometer array manufactured by Senoys (Germany) was used. The sensors were mounted on a wheeled frame approximately 0.25- 1.0 m apart with positional data provided by an RTK GNSS.

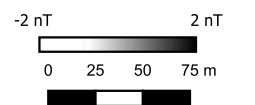
A small amount of post-acquisition processing is required to extract and visualise useful information from the acquired data. Once this is achieved successfully, the data are gridded and presented in this greyscale format.

Geophysical techniques are a measurement of material properties. Detecting and mapping the desired targets requires a measurable contrast between the target and the surrounding ground material. Interpretation of geophysical data should be carried out by qualified and experienced personnel but remains inherently subjective.

#### Overview map



- Probable Archaeology
- Possible Archaeology
- Natural
- Agricultural (Strong)
- Agricultural (Weak)
- Uncertain
- Ferrous Point
- Ferrous Spread
- Magnetic Interference
- Extraction
- Unable to Survey
- Agricultural (Strong)
- Agricultural (Weak)
- Buried Utility



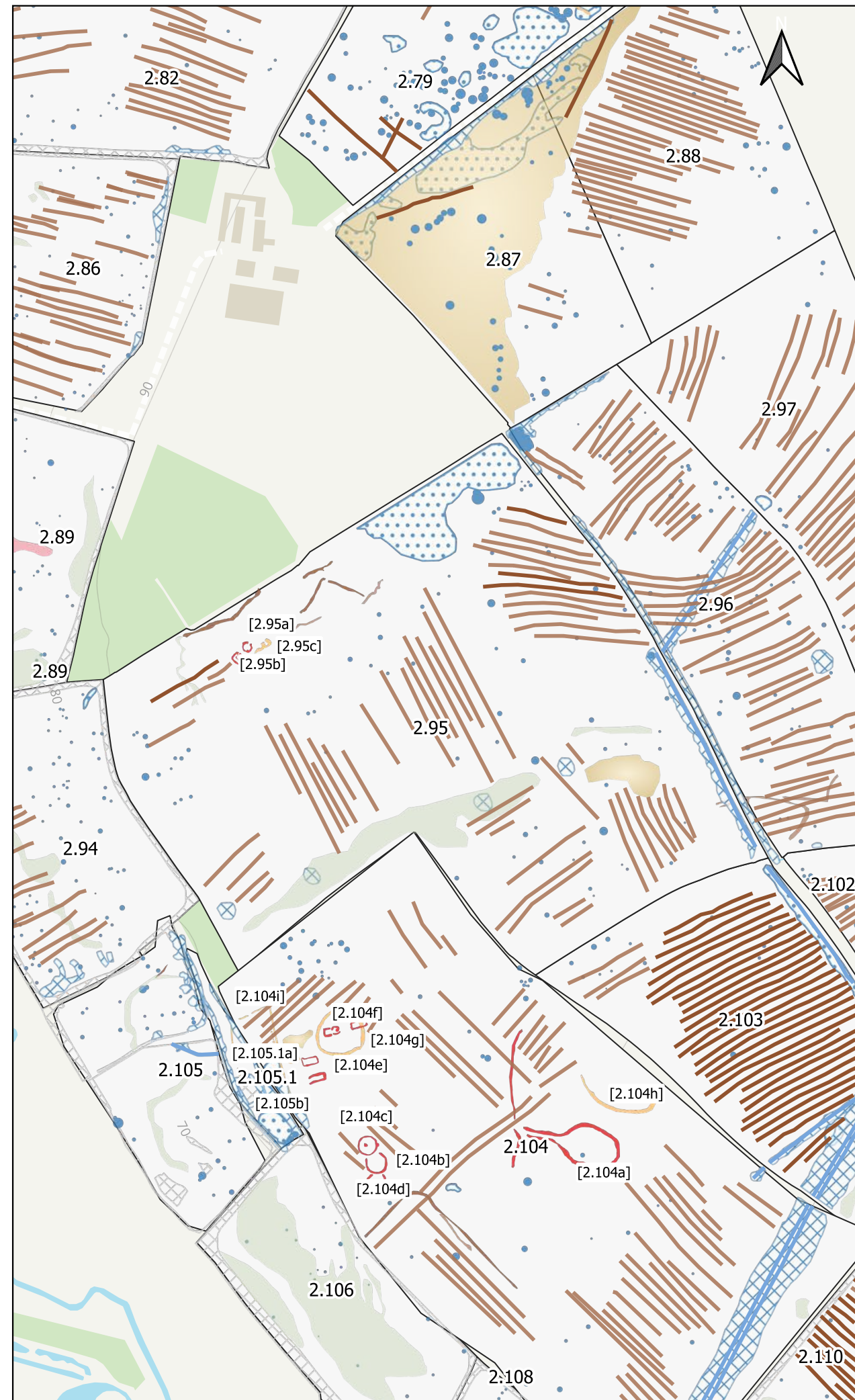
**atlas** geophysical  
Atlas Geophysical Ltd  
Garden House  
Heol Gledid  
Ystradgynlais  
Powys  
SA9 1LQ  
01639 874 104  
info@atlasgeo.co.uk

**Project:**  
AG1803 Botely West

**Client:**  
Photovolt Development Partners GmbH

<b>Project:</b> AG1803	<b>Sheet:</b> Field 2.94
<b>Date:</b> November 2024	
<b>Scale:</b> 1 : 4000 @A3	





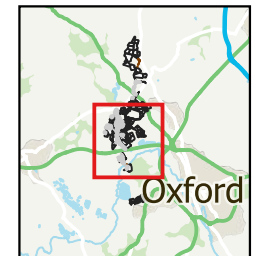
### General Notes & Key

For this geophysical investigation, the fluxgate gradiometer array manufactured by Senosys (Germany) was used. The sensors were mounted on a wheeled frame approximately 0.25- 1.0 m apart with positional data provided by an RTK GNSS.

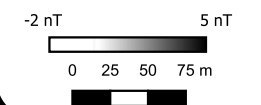
A small amount of post-acquisition processing is required to extract and visualise useful information from the acquired data. Once this is achieved successfully, the data are gridded and presented in this greyscale format.

Geophysical techniques are a measurement of material properties. Detecting and mapping the desired targets requires a measurable contrast between the target and the surrounding ground material. Interpretation of geophysical data should be carried out by qualified and experienced personnel but remains inherently subjective.

#### Overview map



- Probable Archaeology
- Possible Archaeology
- Natural
- Agricultural (Strong)
- Agricultural (Weak)
- Uncertain
- Ferrous Point
- Ferrous Spread
- Magnetic Interference
- Extraction
- Unable to Survey
- Agricultural (Strong)
- Agricultural (Weak)
- Buried Utility



**atlas** geophysical  
Atlas Geophysical Ltd  
Garden House  
Heol Gledid  
Ystradgynlais  
Powys  
SA9 1LQ  
01639 874 104  
info@atlasgeo.co.uk

**Project:**  
AG1803 Botely West

**Client:**  
Photovolt Development Partners GmbH

<b>Project:</b> AG1803	<b>Sheet:</b> Field 2.95
<b>Date:</b> November 2024	
<b>Scale:</b> 1 : 5000 @A3	

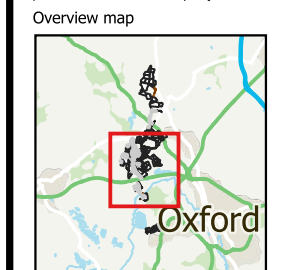




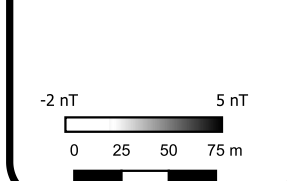
**General Notes & Key**  
For this geophysical investigation, the fluxgate gradiometer array manufactured by Senoys (Germany) was used.  
The sensors were mounted on a wheeled frame approximately 0.25- 1.0 m apart with positional data provided by an RTK GNSS.

A small amount of post-acquisition processing is required to extract and visualise useful information from the acquired data. Once this is achieved successfully, the data are gridded and presented in this greyscale format.

Geophysical techniques are a measurement of material properties. Detecting and mapping the desired targets requires a measurable contrast between the target and the surrounding ground material. Interpretation of geophysical data should be carried out by qualified and experienced personnel but remains inherently subjective.



- Probable Archaeology
- Possible Archaeology
- Natural
- Agricultural (Strong)
- Agricultural (Weak)
- Ferrous Point
- Ferrous Spread
- Magnetic Interference
- Extraction
- Unable to Survey
- Agricultural (Strong)
- Agricultural (Weak)
- Buried Utility



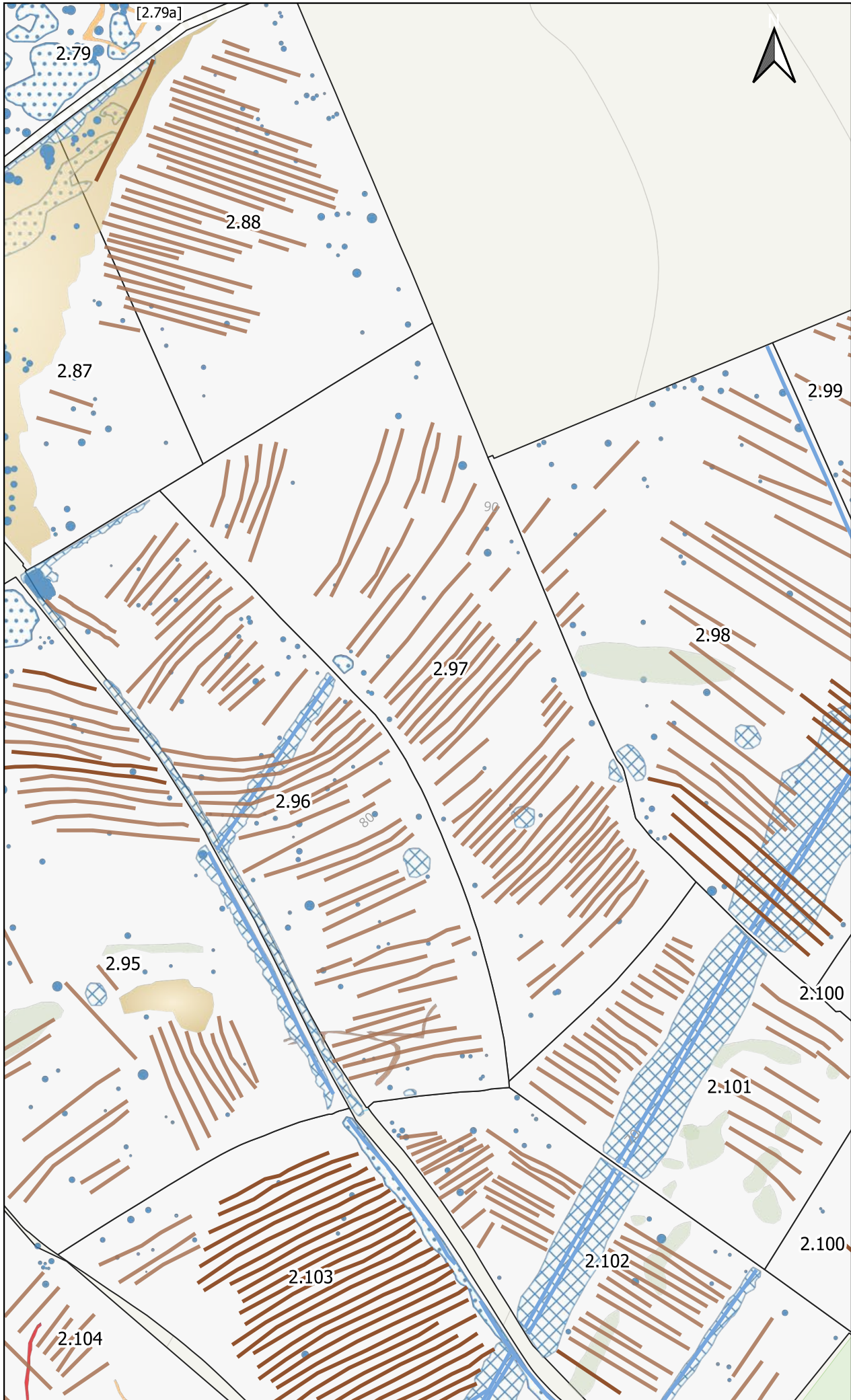
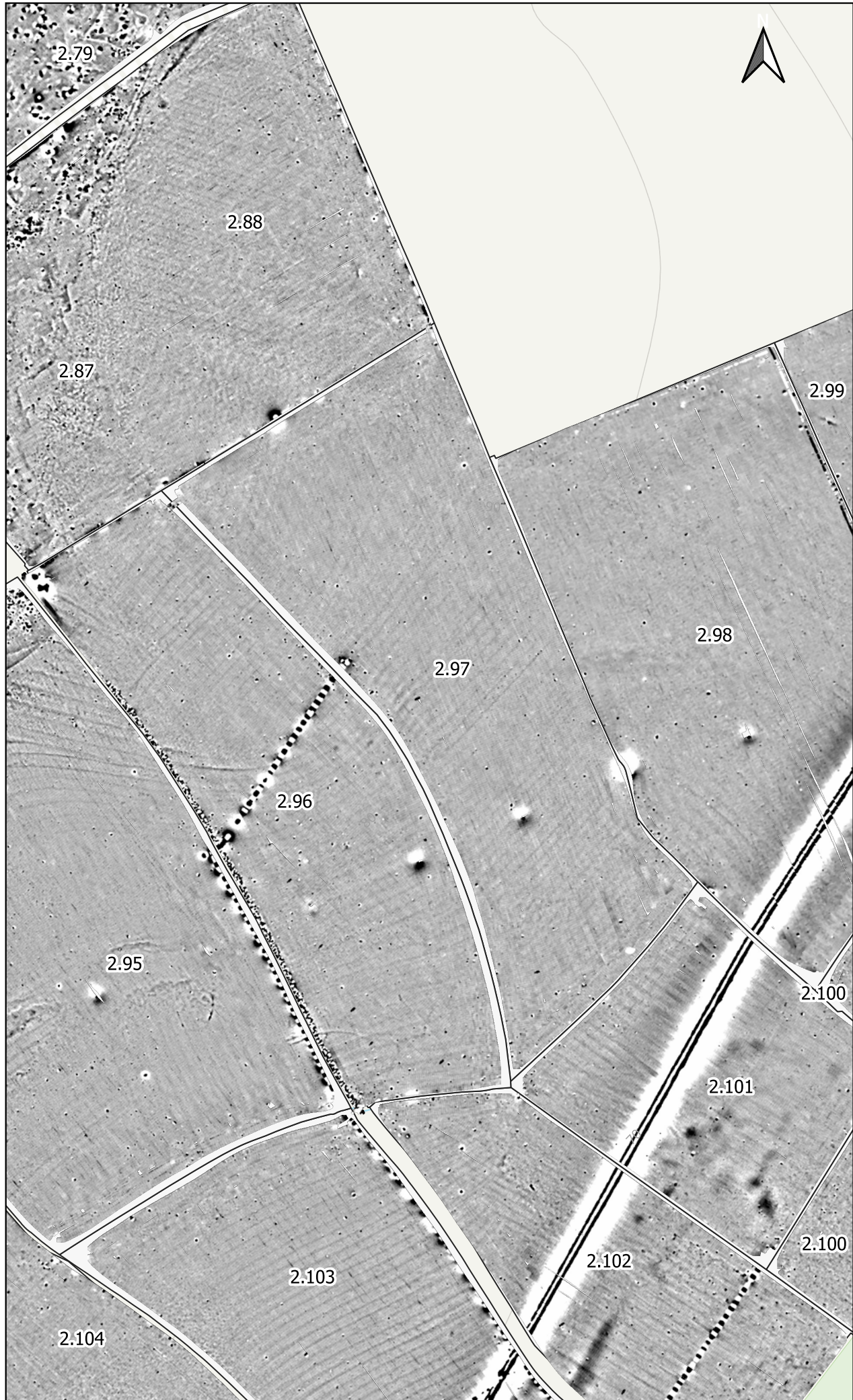
**atlas**  
geophysical  
Atlas Geophysical Ltd  
Garden House  
Heol Gledid  
Ystradgynlais  
Powys  
SA9 1LQ  
01639 874 104  
info@atlasgeo.co.uk

**Project:**  
AG1803 Botely West

**Client:**  
Photovolt Development Partners GmbH

<b>Project:</b> AG1803	<b>Sheet:</b>
<b>Date:</b> November 2024	Field 2.96
<b>Scale:</b> 1 : 4000 @A3	





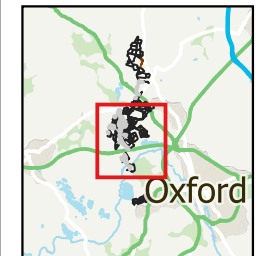
#### General Notes & Key

For this geophysical investigation, the fluxgate gradiometer array manufactured by Senoys (Germany) was used. The sensors were mounted on a wheeled frame approximately 0.25- 1.0 m apart with positional data provided by an RTK GNSS.

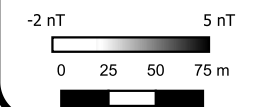
A small amount of post-acquisition processing is required to extract and visualise useful information from the acquired data. Once this is achieved successfully, the data are gridded and presented in this greyscales format.

Geophysical techniques are a measurement of material properties. Detecting and mapping the desired targets requires a measurable contrast between the target and the surrounding ground material. Interpretation of geophysical data should be carried out by qualified and experienced personnel but remains inherently subjective.

#### Overview map



- Probable Archaeology
- Possible Archaeology
- Natural
- Agricultural (Weak)
- Ferrous Point
- Ferrous Spread
- Magnetic Interference
- Extraction
- Agricultural (Strong)
- Agricultural (Weak)
- Buried Utility



**atlas**  
geophysical  
Atlas Geophysical Ltd  
Garden House  
Heol Gledid  
Ystradgynlais  
Powys  
SA9 1LQ  
01639 874 104  
info@atlasgeo.co.uk

#### Project:

AG1803 Botely West

#### Client:

Photovolt Development Partners  
GmbH

Project:  
AG1803

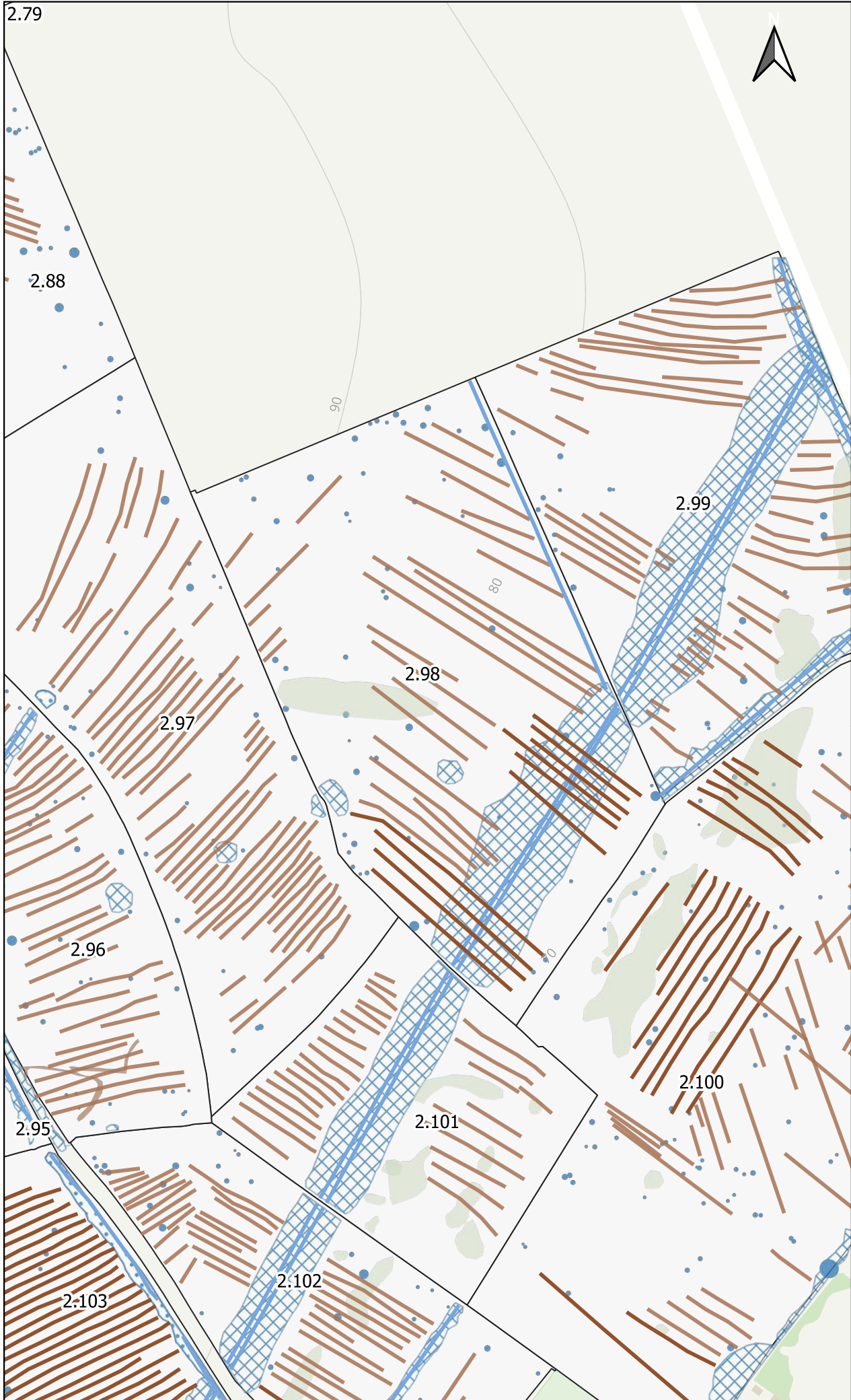
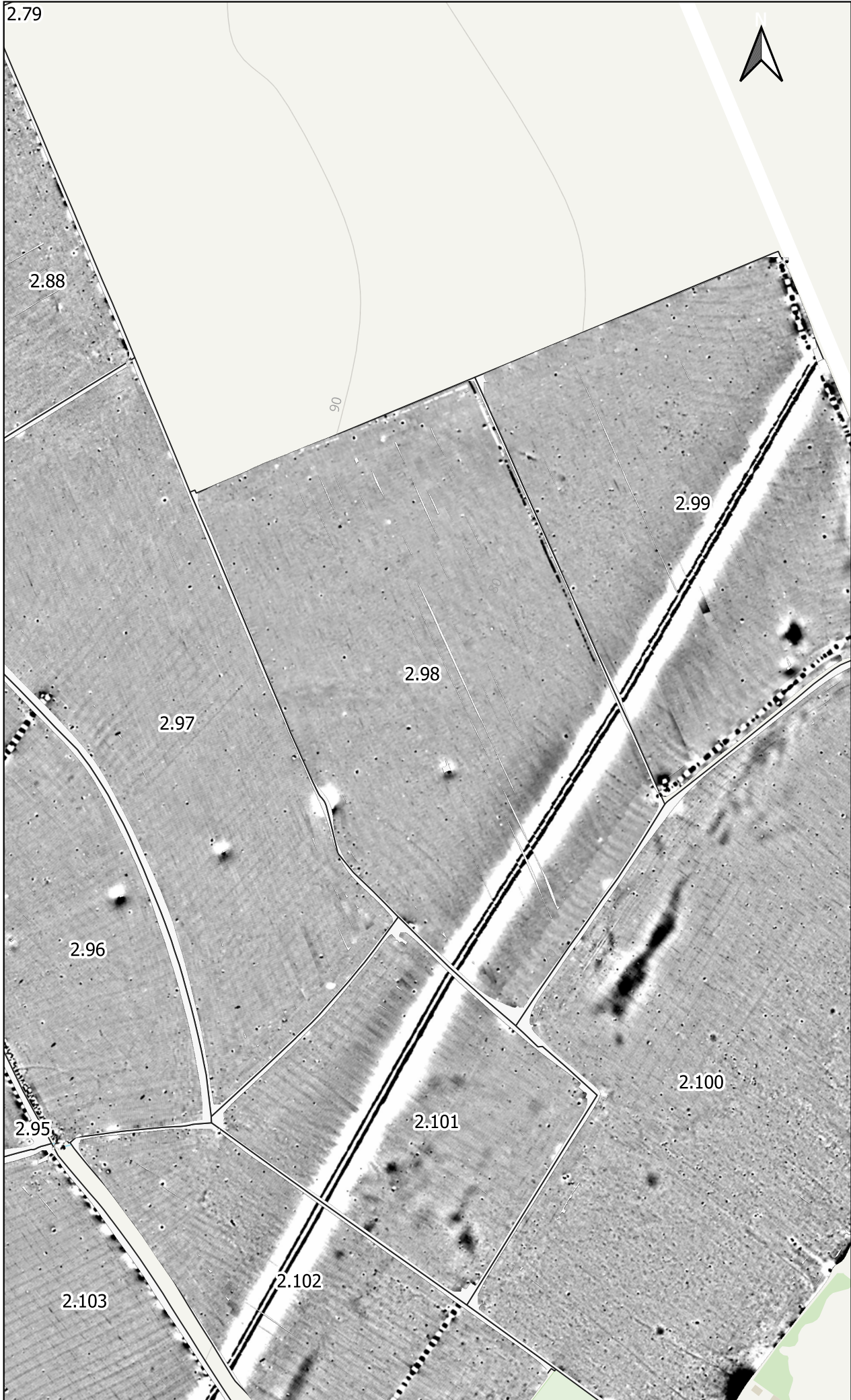
Date:  
November 2024

Scale:  
1 : 4000 @A3

Sheet:

Field 2.97

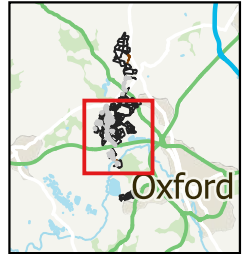




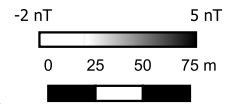
**General Notes & Key**  
For this geophysical investigation, the fluxgate gradiometer array manufactured by Senoys (Germany) was used.  
The sensors were mounted on a wheeled frame approximately 0.25- 1.0 m apart with positional data provided by an RTK GNSS.  
A small amount of post-acquisition processing is required to extract and visualise useful information from the acquired data. Once this is achieved successfully, the data are gridded and presented in this greyscales format.

Geophysical techniques are a measurement of material properties. Detecting and mapping the desired targets requires a measurable contrast between the target and the surrounding ground material. Interpretation of geophysical data should be carried out by qualified and experienced personnel but remains inherently subjective.

**Overview map**



- Natural
- Agricultural (Weak)
- Ferrous Point
- Ferrous Spread
- Magnetic Interference
- Agricultural (Strong)
- Agricultural (Weak)
- Buried Utility

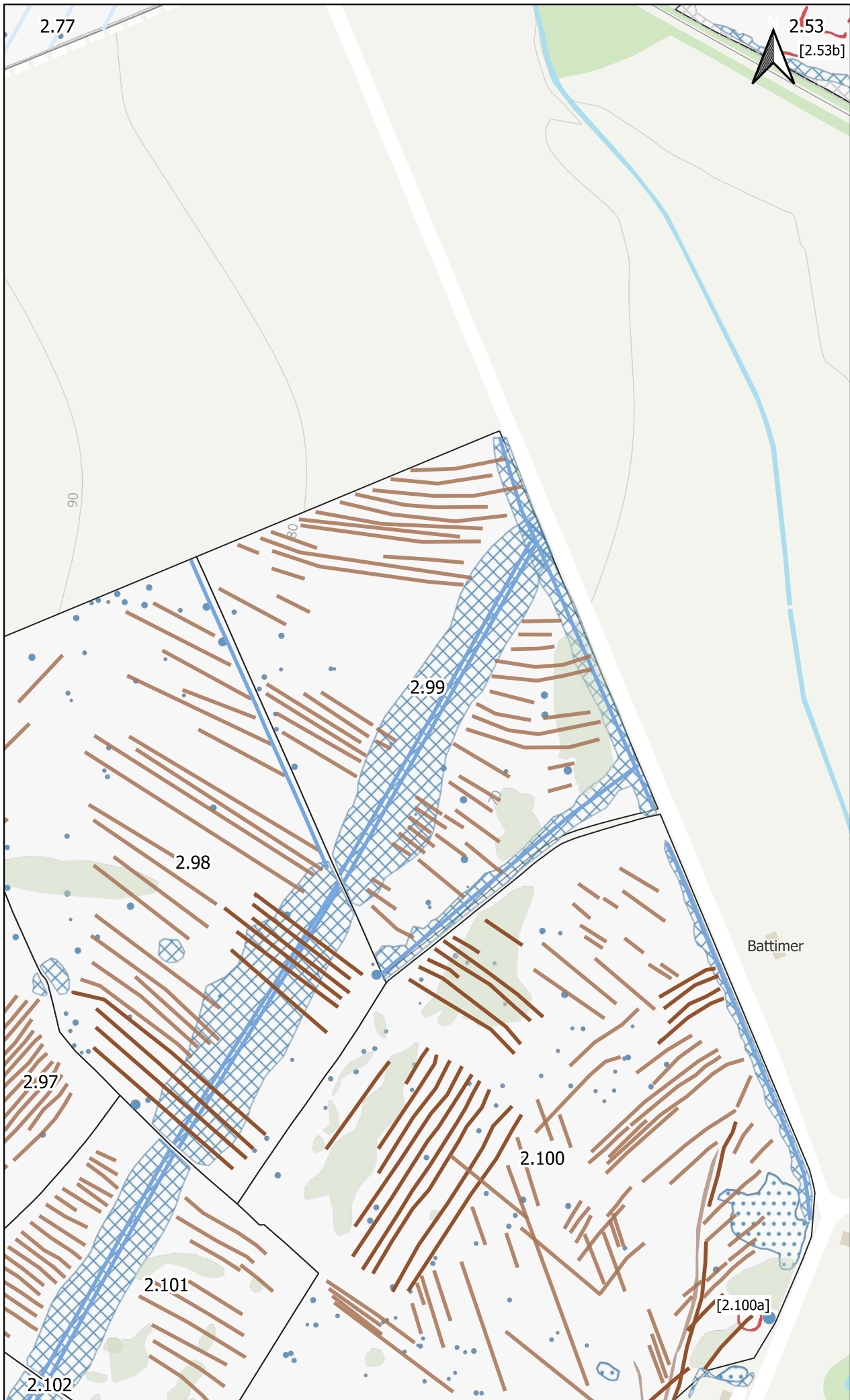


**atlas**  
geophysical  
Atlas Geophysical Ltd  
Garden House  
Heol Gledid  
Ystradgynlais  
Powys  
SA9 1LQ  
01639 874 104  
info@atlasgeo.co.uk

**Project:**  
AG1803 Botely West  
**Client:**  
Photovolt Development Partners GmbH

<b>Project:</b> AG1803	<b>Sheet:</b> Field 2.98
<b>Date:</b> November 2024	
<b>Scale:</b> 1 : 4000 @A3	





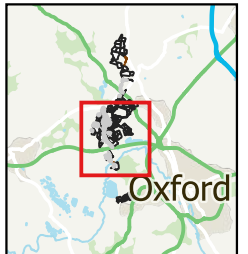
### General Notes & Key

For this geophysical investigation, the fluxgate gradiometer array manufactured by Senoys (Germany) was used. The sensors were mounted on a wheeled frame approximately 0.25- 1.0 m apart with positional data provided by an RTK GNSS.

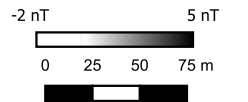
A small amount of post-acquisition processing is required to extract and visualise useful information from the acquired data. Once this is achieved successfully, the data are gridded and presented in this greyscale format.

Geophysical techniques are a measurement of material properties. Detecting and mapping the desired targets requires a measurable contrast between the target and the surrounding ground material. Interpretation of geophysical data should be carried out by qualified and experienced personnel but remains inherently subjective.

#### Overview map



- Probable Archaeology
- Natural
- Agricultural (Weak)
- Ferrous Point
- Ferrous Spread
- Magnetic Interference
- Unable to Survey
- Agricultural (Strong)
- Agricultural (Weak)
- Possible land drain
- Buried Utility



**atlas**  
geophysical  
Atlas Geophysical Ltd  
Garden House  
Heol Gledid  
Ystradgynlais  
Powys  
SA9 1LQ  
01639 874 104  
info@atlasgeo.co.uk

#### Project:

AG1803 Botely West

#### Client:

Photovolt Development Partners  
GmbH

#### Project:

AG1803

#### Date:

November 2024

#### Scale:

1 : 4000 @A3

#### Sheet:

Field 2.99